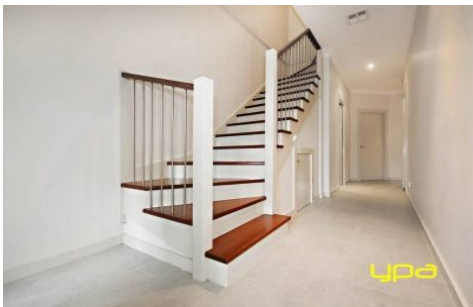


# ypa



## 13 Beaconsfield Lane CAROLINE SPRINGS VIC

3  3  2 

Already leased and still under builder's warranty and positioned in the trendy 'Esplanade' Estate, this double story delight offers a functional floor plan with quality inclusions.

**View :** <https://www.ypa.com.au/7386201>

\*Comprising 3 generous bedrooms, spacious master bedroom

features walk in robes, private balcony & double vanity ensuite with large shower.

\*Downstairs, a good size study with door enclosure or 4th bedroom offers great flexibility of a separate guest or elder parents room along with adjoining 3rd bathroom.

\*Immaculate kitchen with stone bench tops, walk in pantry &

quality S/S appliances including dishwasher overlooking light