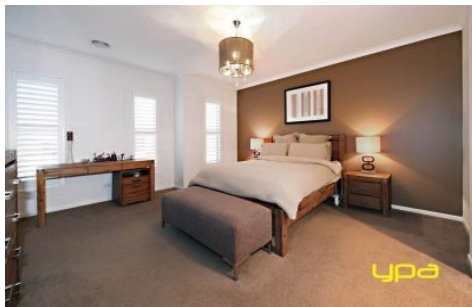
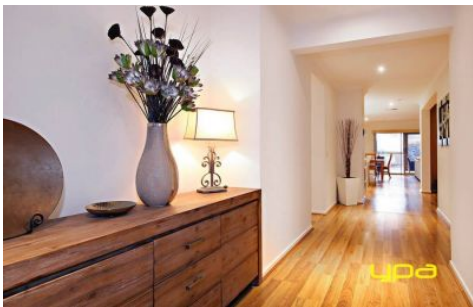


# Ypa



8 Keynes Circuit PLUMPTON VIC

4 🏠 2 🚗 2 🚗

The moment you step inside this magnificent home through the grand entrance you will be moved with the ultra-high ceilings, wide hallway and the Carlisle built quality you would expect to see in an outstanding residence like this. The styling is amazing with nothing left to do but move in unpack and enjoy for the years to come with family and friends. Comprising of four large bedrooms with double built in robes, master bedroom offers walk in robe and extra spacious modern ensuite with oversize shower and double vanity. Two spacious separate living areas plus your very own private cinema room fitted with bar, the open plan kitchen offers butlers pantry, Caesar stone benchtops, 900mm upright stainless steel cooker including dishwasher, glass splashback and ample cupboard space for any chef at heart. Additional extras include gas log fire in family room, gas ducted heating, evaporative cooling, ducted vacuum, alarm, intercom and double garage. A resort

**Price** : \$ 710,000  
**View** : <https://www.ypa.com.au/7386293>



**Menka Zdraveska**  
**0404 160 951**