



2 Pepper Tree Court CAROLINE SPRINGS VIC

4 2 2

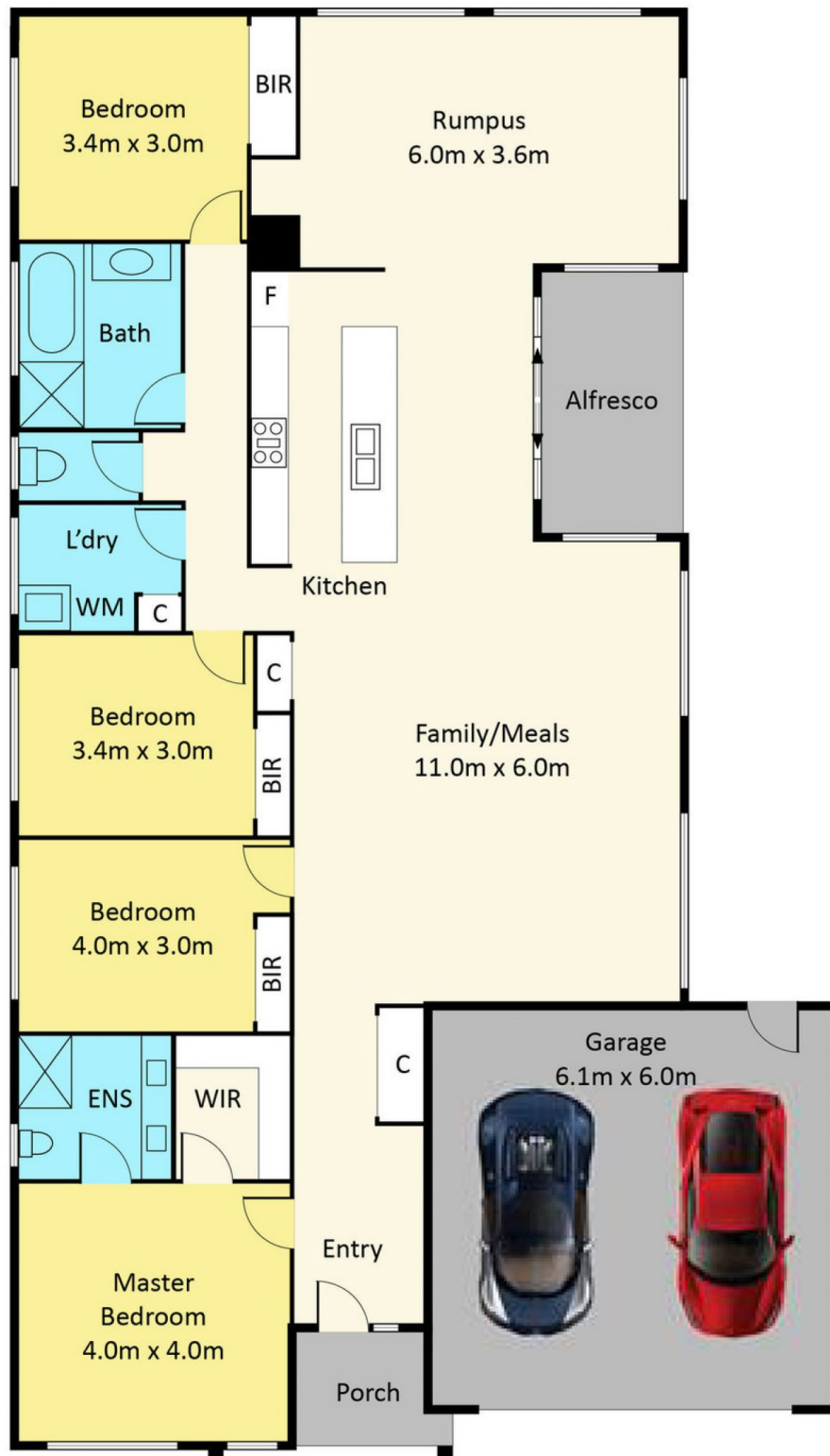
With an immaculate presentation and the ideal locale, this single storey stunner is perfectly suited to those looking for that something special.

Land Size : 448 sqm
View : <https://www.ypa.com.au/7386671>

Comprising of the following:

- Four spacious bedrooms all with built in robes
- Master bedroom features walk in robe and full ensuite (double vanities)
- Open plan kitchen which includes first class stainless steel appliances, Caesar stone bench tops, 900mm gas cooktop and dishwasher
- The kitchen is located perfectly to incorporate the meals/family area allowing ample space for entertaining
- Separate lounge/rumpus room
- Central bathroom with bathtub
- Added extras include gas ducted heating, evaporative

2 Pepper Tree Court, Caroline Springs



Not to Scale

Disclaimer: Whilst we believe the contents of this document to be accurate, we suggest the prospective purchasers make any necessary enquiries to satisfy themselves. We do not accept responsibility for any errors or omissions.