



4 Botanical Drive CAROLINE SPRINGS VIC

4 2 2

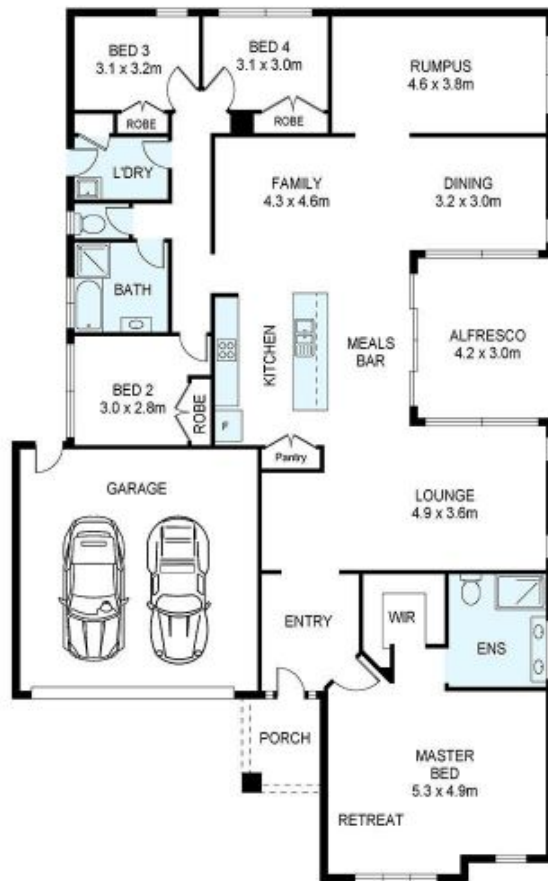
This stunning ex-display Porter Davis family home located in the premier Edenfield Estate of Caroline Springs is being offered for the first time and comprising of all the upgrades you could possibly desire. You feel the sheer luxuriousness, the moment you arrive at this ultra-spacious family home situated on an impressive allotment with gorgeous manicured front gardens, then the stunning wide entrance welcoming you. Stepping through inside, you are wowed by the luxurious timber flooring running through the home which is just one element of the sheer luxury this property offers.

Comprising of four generous size bedrooms, master with king size ensuite and a huge walk in robe as well as an elevated bedroom suite, while the remaining bedrooms all offer large built in robes. Three large separate living areas all offer generous size and ample room for the entire family to have their own living space, the formal lounge includes a

Price : \$ 740,000
Land Size : 449 sqm
View : <https://www.ypa.com.au/7386745>



Joel Rawle
 0416 165 473



Scale in metres indicative only. Dimensions are approximate. All information contained herein is gathered from sources we believe to be reliable. However we cannot guarantee its accuracy and interested persons should rely on their own enquiries.



4 Botanical Drive, Caroline Springs