



68 Station Road DEER PARK VIC

4 1 2

Like flicking through the pages of a glossy magazine! Set in a prestigious location stands a majestic Federation influenced home to put on the top of your priority list. You will find the perfect combination of family living in Deer Parks most elite location. Only walking distance to Ballarat Road shopping strip, local primary and secondary schools, public transport, local shopping centres and so much more. This outstanding home is unquestionably something you would be proud to call home.

Features Include:

Master bedroom showcasing a built-in wardrobe and gas log fire place

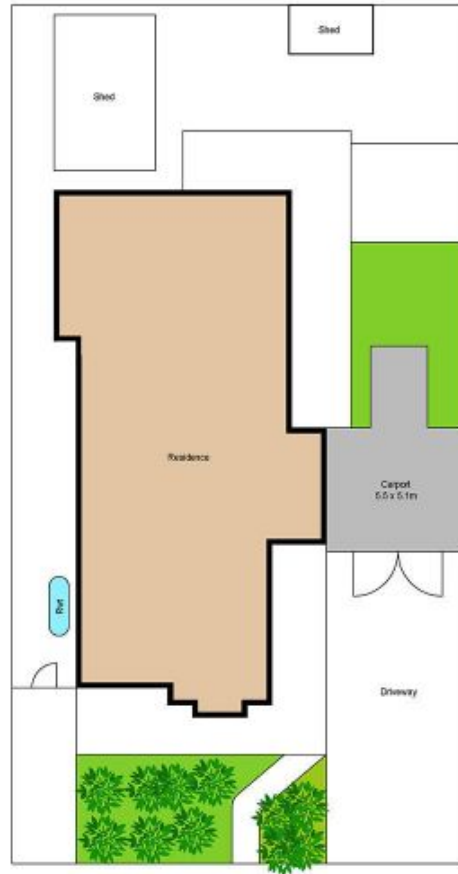
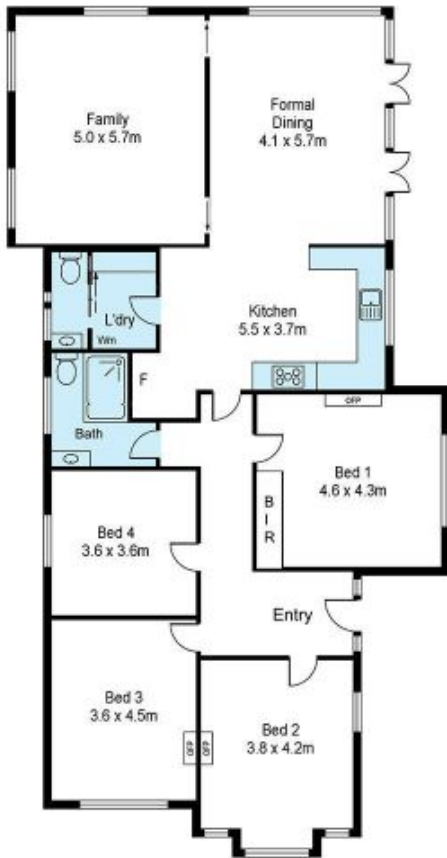
Additional three spacious bedrooms with two of them featuring open fire places

The kitchen is located perfectly to incorporate the large meals space which leads out to an outdoor pergola area

Price : \$ 675,000
Land Size : 644 sqm
View : <https://www.ypa.com.au/7386763>



Andrew Migliorisi
0432 526 844



Scale in metres. Indicative only. Dimensions are approximate. All information contained herein is gathered from sources we believe to be reliable. However we cannot guarantee its accuracy and interested persons should rely on their own enquiries.



68 Station Road, Deer Park