



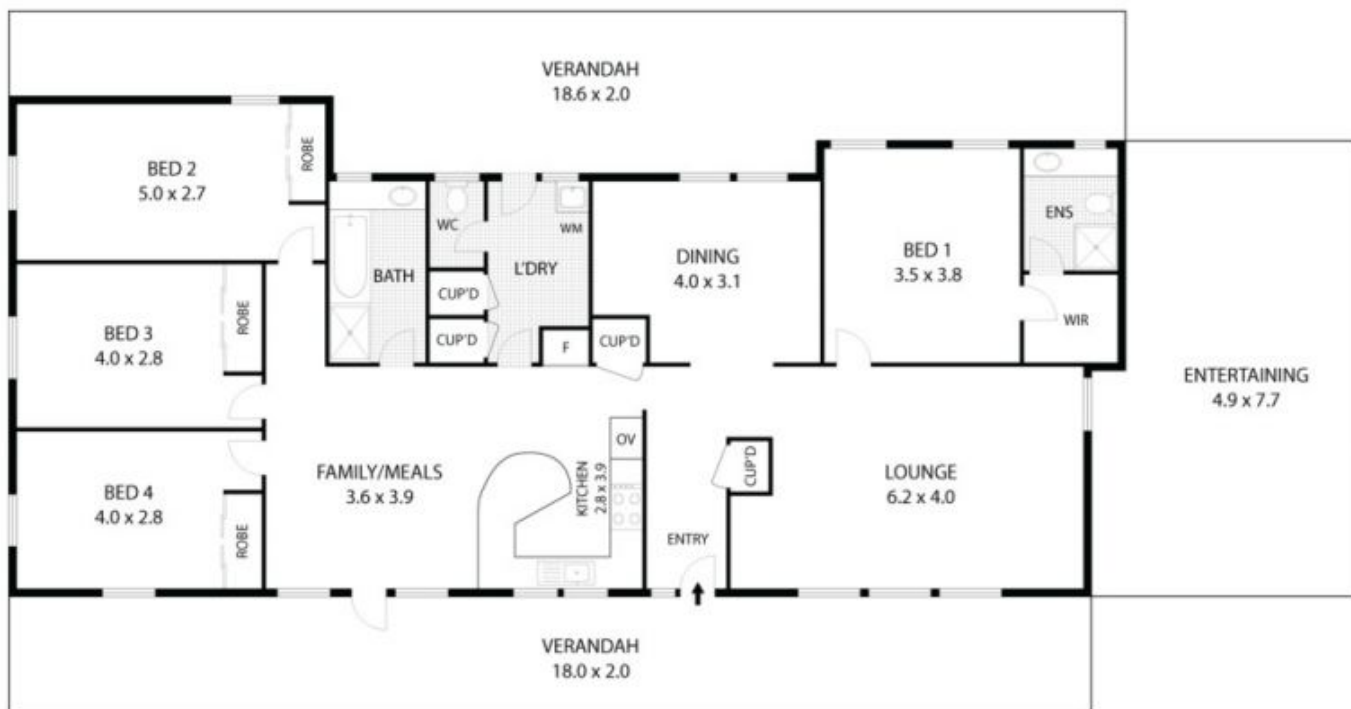
## 10 Cradle Road DIGGERS REST VIC

4 2

**View** : <https://www.ypa.com.au/7388274>

If the thought of living in a community that really cares appeals to you for your family, then this great family home in the established part of Diggers Rest is just the ticket! With easy access to the Calder Freeway and Melbourne's CBD, this well presented, freshly painted home has new carpets and blinds and offers:

- 4 bedrooms all with BIRs, master with WIR and FES
- Two separate living zone
- Kitchen with d/washer and plenty of bench and cupboard space
- Separate dining room
- Updated bathroom
- Laundry with ext access
- Drive thru access into the rear yard
- Approx 591sqm allotment
- Your new home is close to the local primary school,



0 1 2 3 4 5

Scale in metres. Indicative only. Dimensions are approximate. All information contained herein is gathered from sources we believe to be reliable. However we cannot guarantee its accuracy and interested parties should rely on their own enquiries.

RESIDENCE - 138m<sup>2</sup>  
VERANDAH - 78m<sup>2</sup>  
ENTERTAINING - 35m<sup>2</sup>



# 10 Cradle Road, Diggers Rest