



16 Earlington Crescent SUNBURY VIC

4  2  2 

WATCH VIDEO NOW! It is certainly not often that the Sunbury Market gets to see a home enriched with so much beauty and elegance, it quickly comes apparent the moment you enter the light filled foyer that every part of this home is top class and no expense has been spared. Set in the prestigious Jacksons Hill Estate on block size of 800m² approx. this 4 years young home offers a quality that cannot be replicated.

Property Features Include:

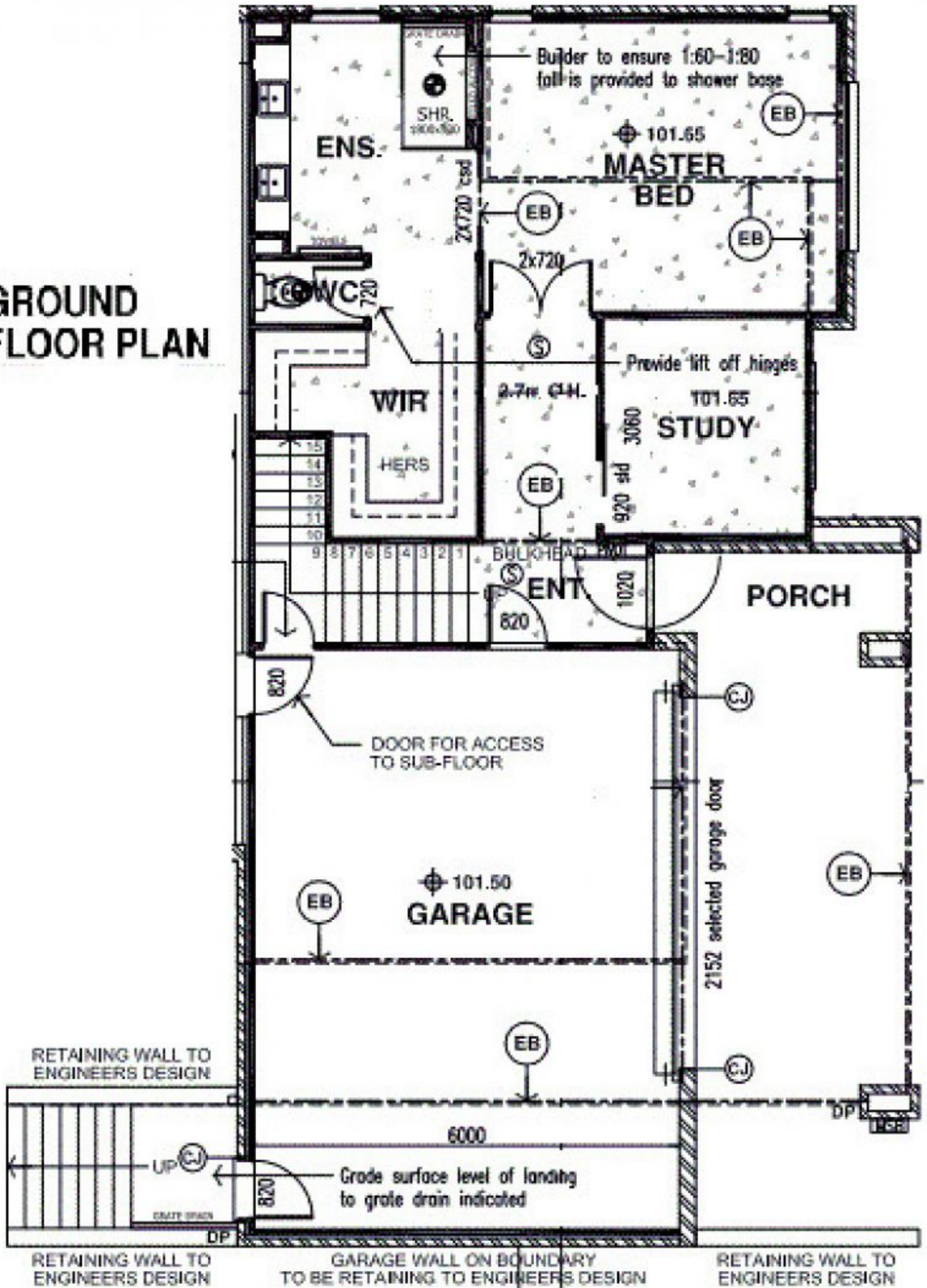
- 4 bedrooms with BIRs Master with FES & WIR
- Study/home office
- Central bathroom & powder room
- Kitchen with stone benches, soft closing draws, induction cooktop, 2 ovens, integrated Fridge & dishwasher
- Gas log fire, ducted heating, refrigerated cooling throughout & slab heating to ground floor

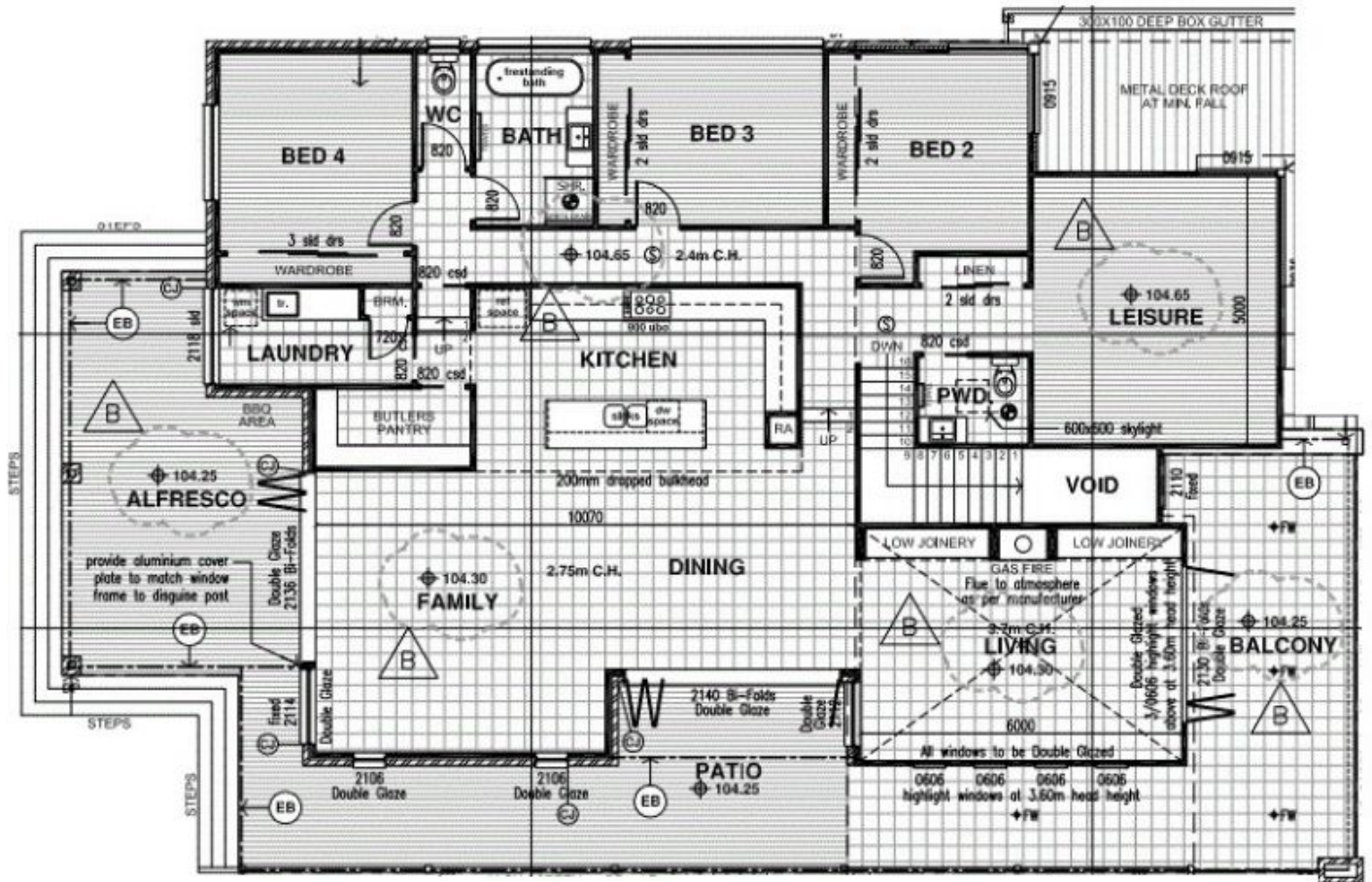
View : <https://www.ypa.com.au/7388289>



Lisa Totaro
0410 144 215

GROUND FLOOR PLAN





FIRST FLOOR PLAN

SCALE 1:100