

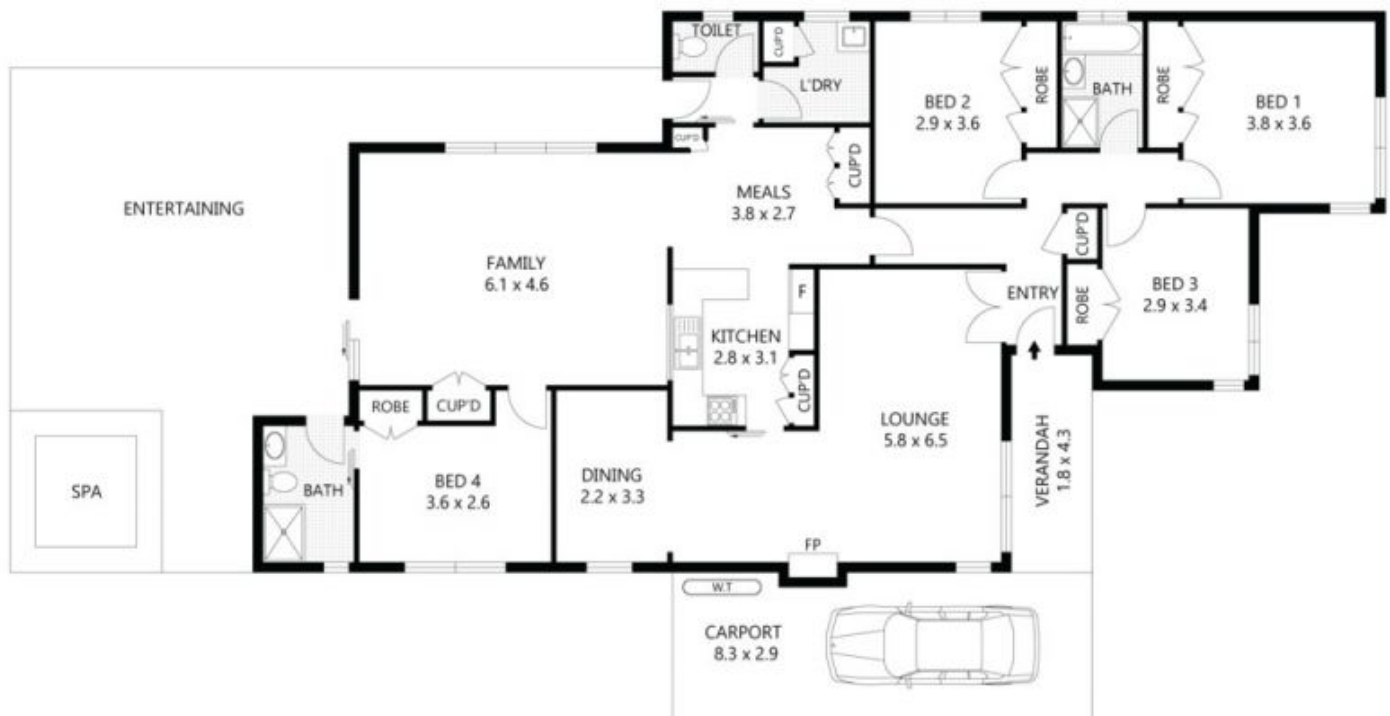
318 Elizabeth Drive SUNBURY VIC

4 2 1

This immaculately maintained and presented home raises the bar for quality and class and will certainly surpass expectations and impress even the most selective buyer. This very private dwelling is situated amidst tranquil landscaped gardens and offers:

View : <https://www.ypa.com.au/7388293>

- 4 bedrooms (all with BIRs)
- 2 bathrooms
- Multiple living zones
- Formal and informal dining areas
- Modern, updated kitchen with soft close drawers and plenty of additional cupboard and bench space
- Ducted heating and evap cooling
- Decked outdoor entertaining area complete with compliant spa
- Garden Shed
- Single carport



Scale in metres. Indicative only. Dimensions are approximate. All information contained herein is gathered from sources we believe to be reliable. However we cannot guarantee its accuracy and interested parties should rely on their own enquiries.

VERANDAH	-	7m ²
CARPORT	-	24m ²
RESIDENCE	-	167m ²



318 Elizabeth Drive, Sunbury