



43 Lister Crescent SUNBURY VIC

4 2 2

Desirably situated in the Killara estate, this split-level home offers a private tranquil setting & is everything a family is about - being generously sized, with a great floor plan, and set on a block size of 650m2 approx. If it's all about location, you can't go past this truly warm and inviting home being close to schools, bus stops, local milk bar, playgrounds, walking tracks and churches at your fingertips & with easy Freeway access, all your bases are covered!

Property features include:

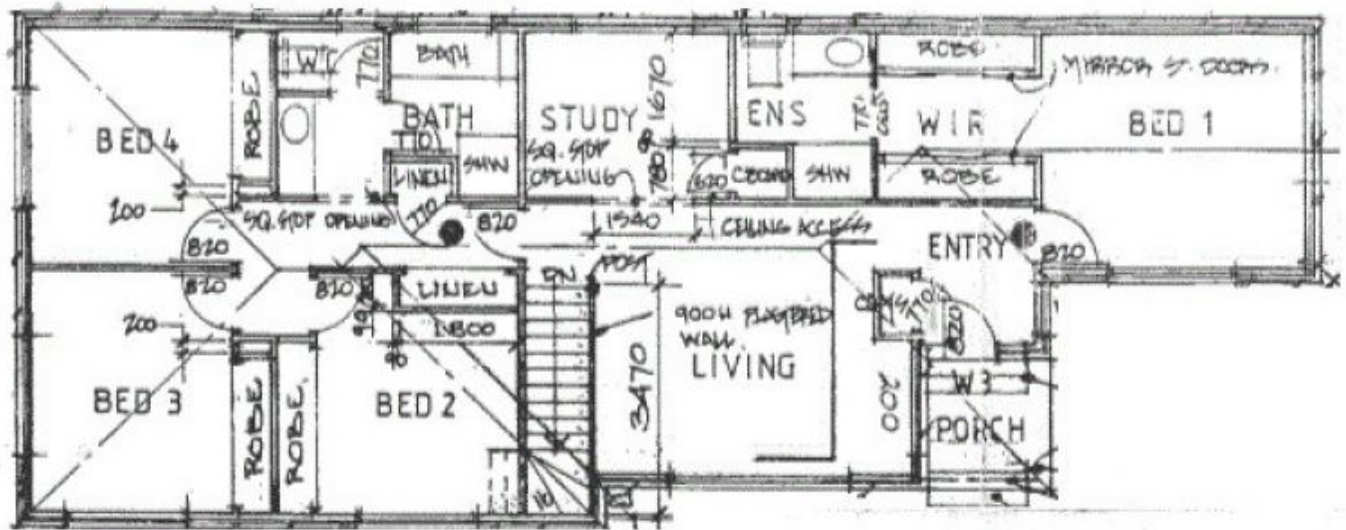
- 4 Bedrooms with BIRs
- Master complete with FES
- Open study
- Central bathroom with separate toilet
- Large kitchen overlooking light filled dining & living
- S/Steel dishwasher, oven & gas cooktop
- Multiple living areas to enjoy
- Laundry with outside access

View : <https://www.ypa.com.au/7388375>



Lisa Totaro
0410 144 215

FLOOR PLAN



LOWER FLOOR PLAN

