



6 Landsborough Drive SUNBURY VIC

3 1 1

Neatly positioned in a desirable location, this brick veneer home offers great value for money. Set on a generous block of 672m² approx. sits a fantastic opportunity for any sharp-witted investors looking to add to their portfolio, developer looking to subdivide (S.T.C.A.), first home buyers or even perfect for the young family. A few minutes from Sunbury township, within a short distance walk to Aldi/Terrace Shopping Centre, schools and bus - this property will be sure to generate plenty of interest.

Features include:

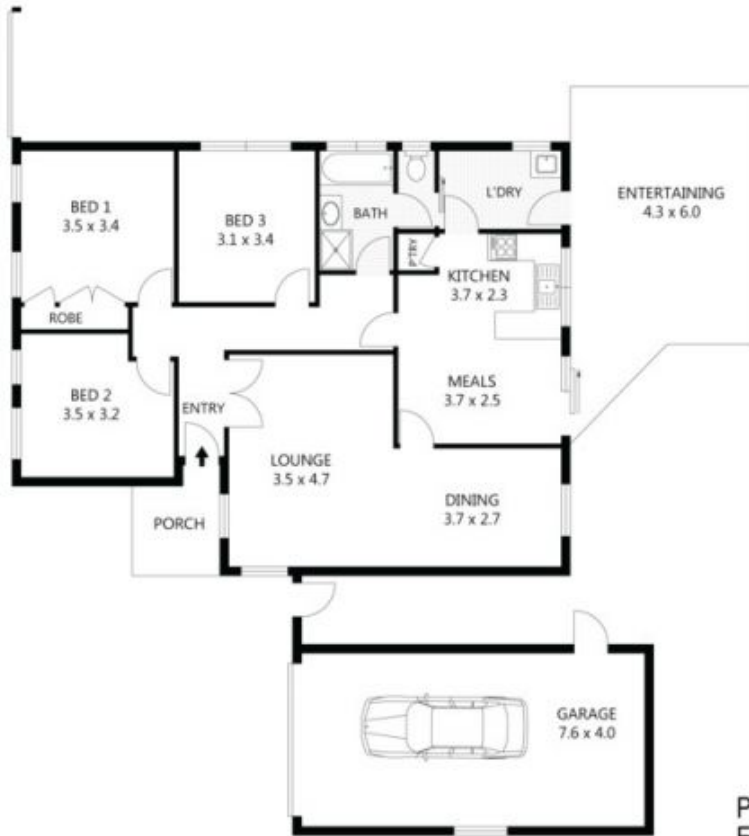
- 3 bedrooms 2 with BIRs
- Central bathroom
- Spacious open living area
- Kitchen is complete with generous adjoining dining
- Laundry with outside access
- Ducted heating
- Air conditioner

Land Size : 672 sqm

View : <https://www.ypa.com.au/7388385>



Lisa Totaro
0410 144 215



PORCH	-	4m ²
ENTERTAINING	-	26m ²
GARAGE	-	30m ²
RESIDENCE	-	102m ²



Scale in metres. Indicative only. Dimensions are approximate. All information contained herein is gathered from sources we believe to be reliable. However we cannot guarantee its accuracy and interested parties should rely on their own enquiries.

6 Landsborough Drive, Sunbury