

90 Sorbonne Drive SUNBURY VIC

3 2 1

Boasting with charm in a prime location within walking distance of sporting facilities, public transport, local convenience store, medical centre, pharmacy and primary school, as well as 15 minutes to the Airport and a mere 30 minutes approx of easy driving to Melbourne CBD, its no wonder people are already making the move to the booming Goonawarra Estate! Set on a low maintenance 360m² approx. block, enjoy the convenient lifestyle you have always craved!

Property features include:

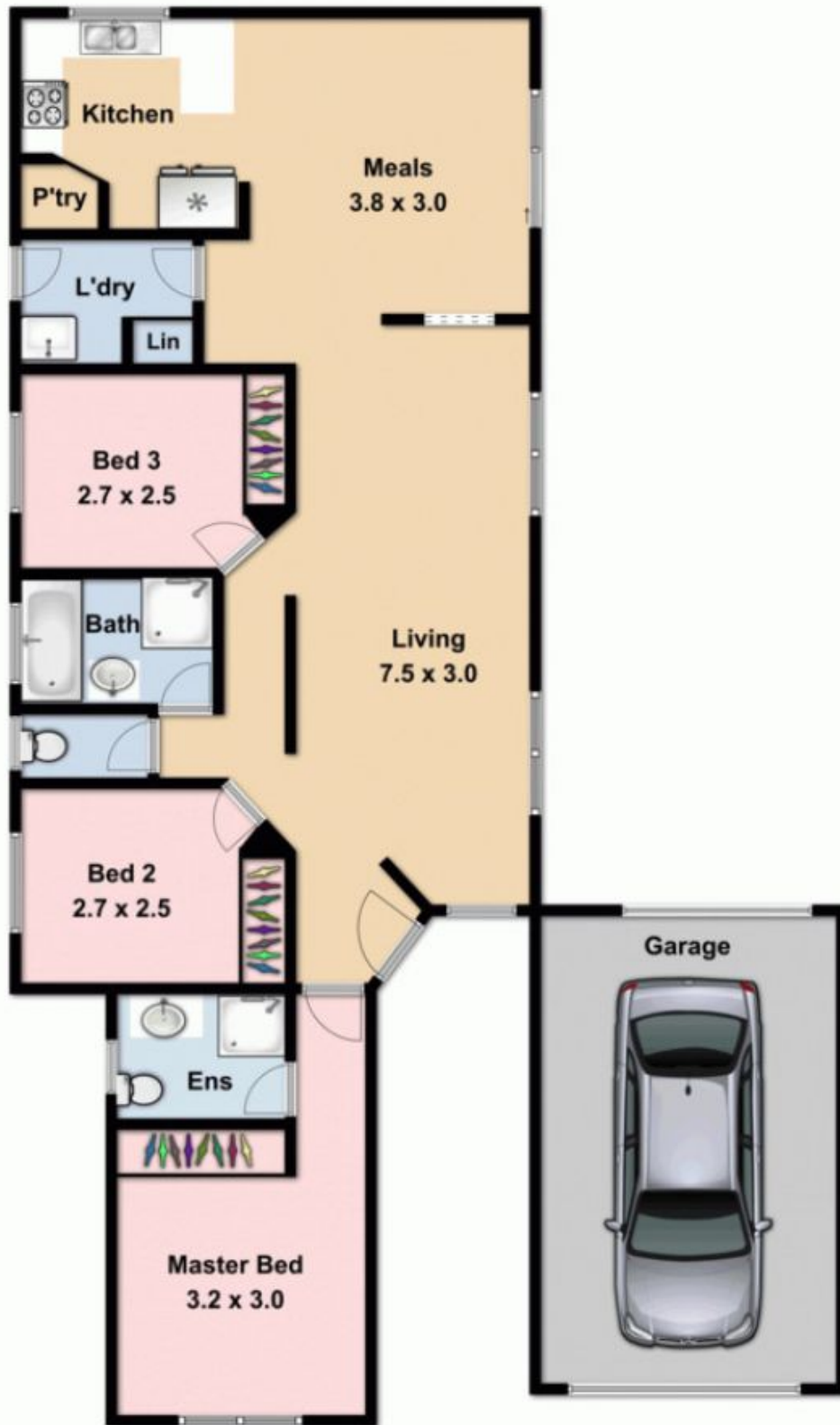
- 3 bedrooms with built in robes - master complete with ensuite
- Central bathroom with separate toilet
- Kitchen overlooking dining
- Kitchen complete with oven and gas cooktop
- Light filled living area
- Laundry with outside access

Land Size : 360 sqm

View : <https://www.ypa.com.au/7388571>



Lisa Totaro
0410 144 215



Whilst bwrn.com.au has made every attempt to ensure the accuracy of the floor plan contained here, measurements are approximate and no responsibility is taken for any error, omission, or mis-statement. This plan is for illustrative purposes only.



90 Sorbonne Drive

Sunbury