



## 13 Prominent Road DIGGERS REST VIC

4  2  2 

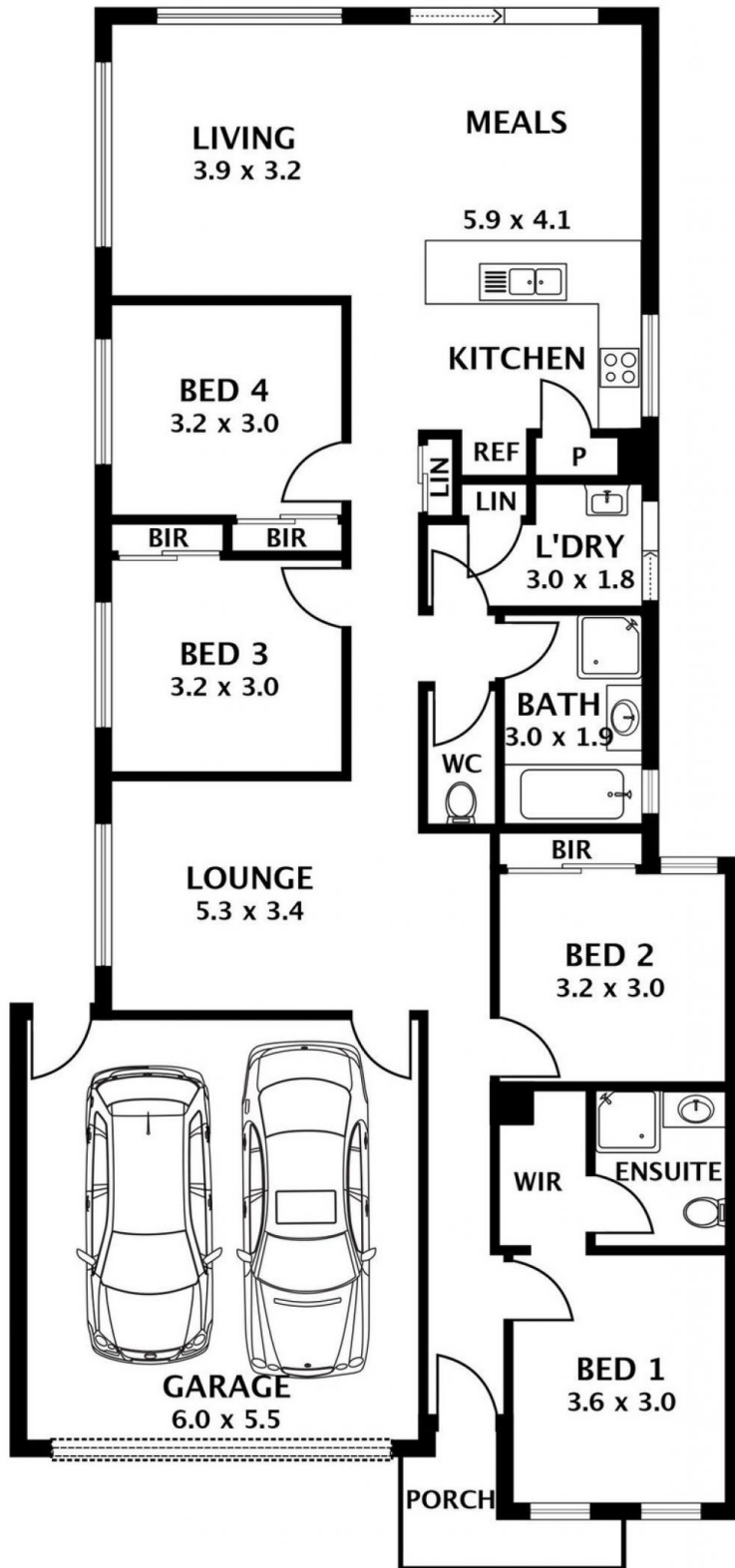
Set in the new booming Diggers Rest Bloomdale Estate. This one is not to be missed. Perfectly positioned being only a short distance to the newly built Early Learning Childcare Centre, Medical Centre, Diggers Rest Primary School, Football Club, public transport, newly established park lands only a few minutes walk away and only 30 minutes approx from the Melbourne CBD - the location could not be more ideal!

**Land Size** : 315 sqm

**View** : <https://www.ypa.com.au/7388618>

Featuring;

- 4 bedrooms 3 with built in robes
- Master complete with walk in robe and full ensuite
- Central bathroom with separate toilet
- Kitchen overlooking meals area
- Kitchen complete with stainless steel oven, gas cooktop & dishwasher
- Separate living areas



Disclaimer. Please note plans are indicative only and not drawn to exact scale. All dimensions are approximate. Potential buyers view the property in person.