

90 Melba Avenue SUNBURY VIC

4 2 4

Situated on a corner allotment of approximately 663m² in one of Sunburys most convenient locations, this home provides everything that any family could need! With the ability to park several cars by having the use of a garage, carport & secure driveway space, you will be able to keep all your cars, trailers and other toys safe all year round. The low maintenance garden provides both security from street views, as well as plenty of space for the kids and pets to play.

Property Features Include:

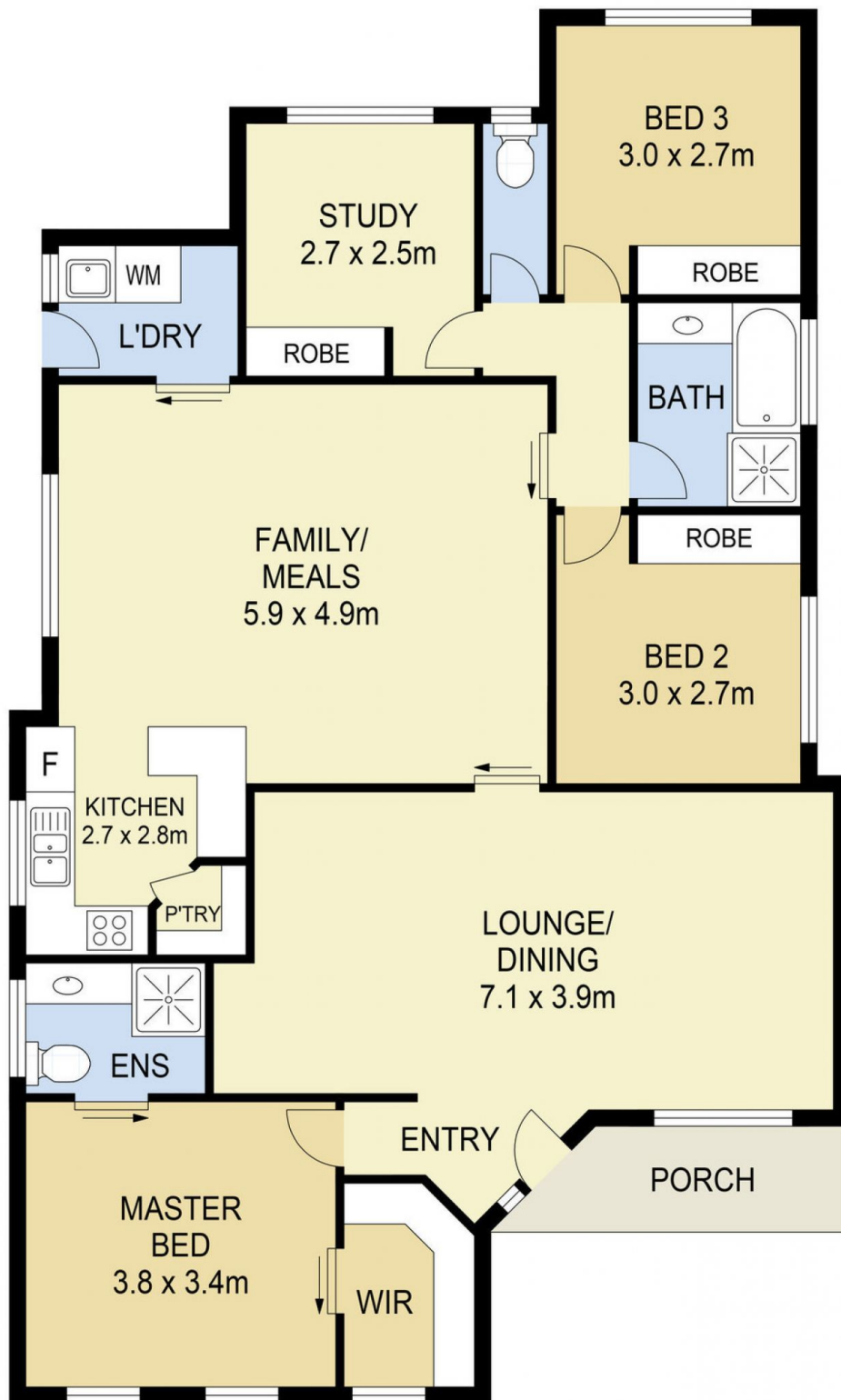
- Master bedroom with ensuite & walk-in-robe
- 3 Additional bedrooms all finished with built in robes
- Open plan kitchen overlooking living and dining space
- Kitchen complete with stainless steel gas cooktop & dishwasher
- Multiple living areas throughout

Land Size : 663 sqm

View : <https://www.ypa.com.au/7388640>



Lisa Totaro
0410 144 215



90 MELBA AVENUE, SUNBURY

DISCLAIMER

PLANS SHOWN ARE FOR MARKETING PURPOSES ONLY. ALL DIMENSIONS ARE APPROXIMATE AND NOT TO SCALE. THEY ARE SUBJECT TO ERRORS AND INACCURACIES AND NO LIABILITY WILL BE ACCEPTED. INTERESTED PARTIES SHOULD MAKE THEIR OWN INQUIRIES.