



3 Reiffel Avenue SUNBURY VIC

3 2 2

Neatly set in the ever popular Ashfield Estate, this family home is the definition of convenience. With Century Park a few steps from your door, bus stops around the corner & only a short drive to both Sunbury Township and newly opened Rosenthal Shopping Centre, this home has everything to offer a young family, first home buyer or investor alike!

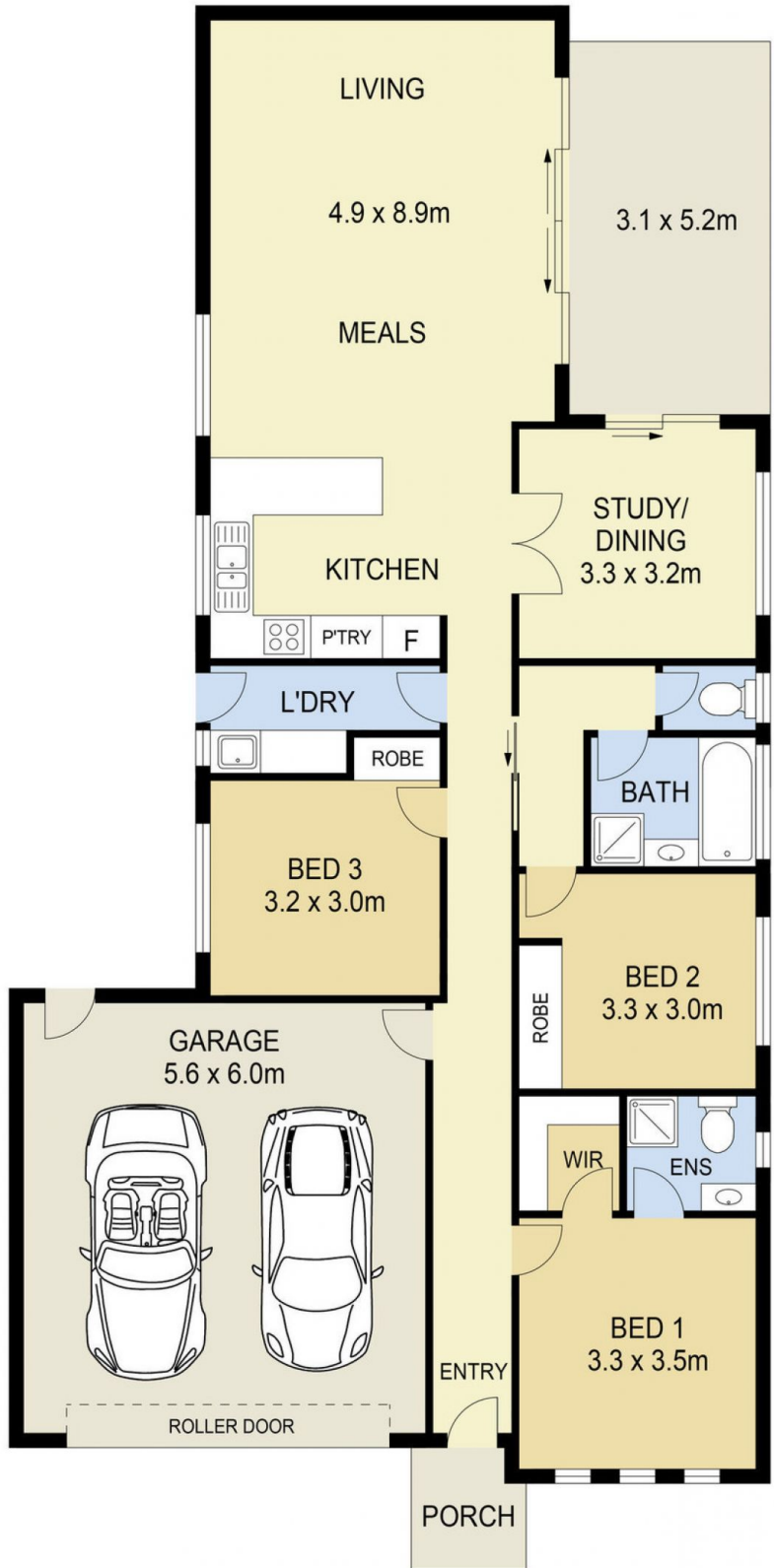
Land Size : 445 sqm
View : <https://www.ypa.com.au/7388641>

Property features include:

- Master bedroom with walk-in-robe & ensuite
- 2 Additional bedrooms with built in robes
- Study/fourth bedroom with sliding door access to yard
- Central bathroom with bathtub & separate toilet
- Open plan kitchen overlooking dining & living area
- Kitchen complete with stainless steel oven, gas cooktop & dishwasher
- Laundry with access to the side yard



Lisa Totaro
0410 144 215



3 REIFFEL AVENUE, SUNBURY

DISCLAIMER

PLANS SHOWN ARE FOR MARKETING PURPOSES ONLY. ALL DIMENSIONS ARE APPROXIMATE AND NOT TO SCALE. THEY ARE SUBJECT TO ERRORS AND INACCURACIES AND NO LIABILITY WILL BE ACCEPTED. INTERESTED PARTIES SHOULD MAKE THEIR OWN INQUIRIES.