



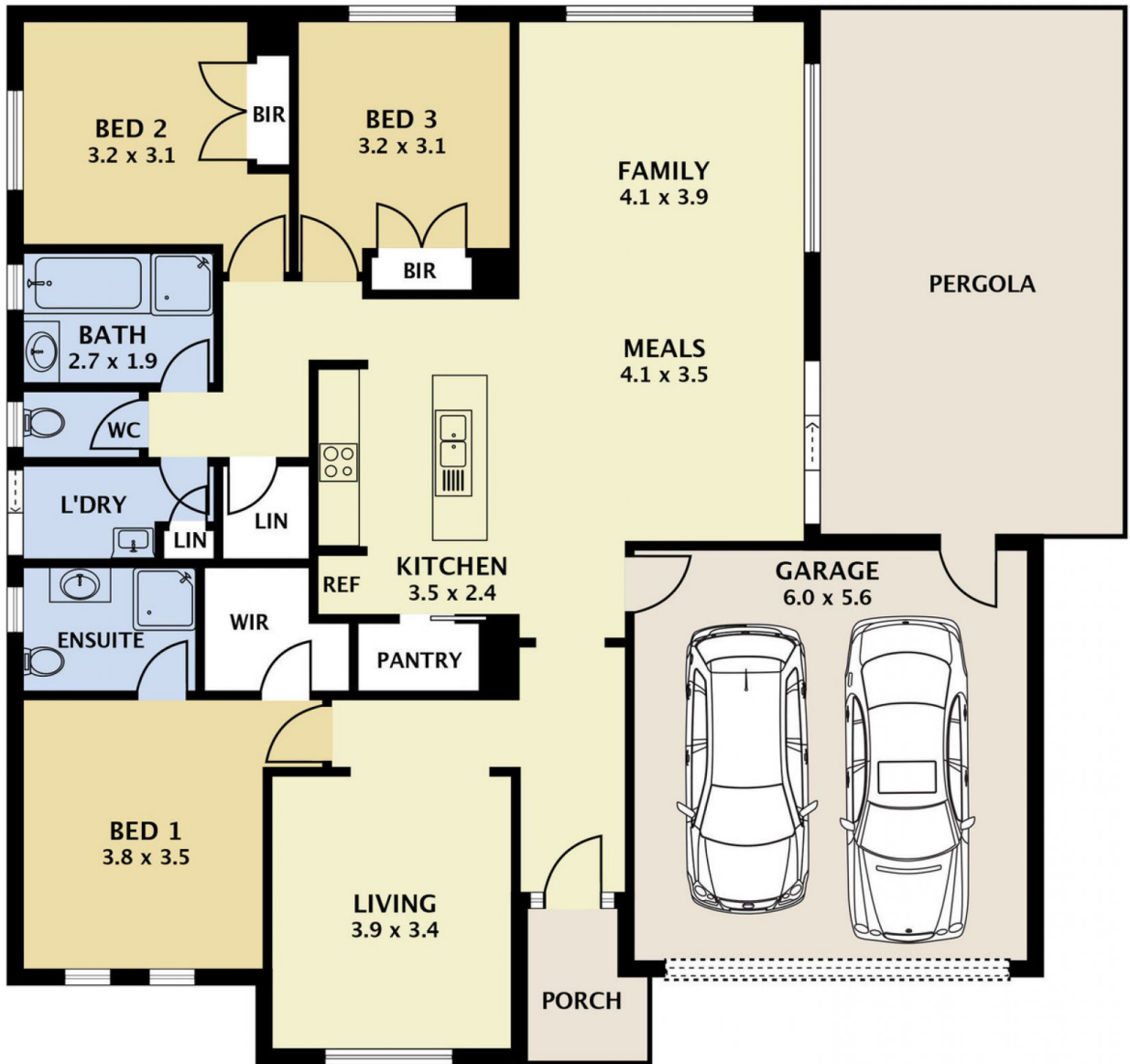
24 Filmer Place RIDDELLS CREEK VIC

3 2 4

A wonderful family home indeed, this complete package on a generous allotment awaits one very lucky new owner! With views through to the foothills of the Macedon Ranges and walking distance to sporting facilities, Primary School, Train Station, restaurants plus all that the delightful township of Riddells Creek has to offer. A wonderful property to be rivalled, immaculate in its presentation, the floor plan is exceptional including open plan family & meals area, galley style kitchen with breakfast bar, walk-in pantry and stainless-steel appliances. Live easy with multiple living spaces, large carpeted formal lounge makes the perfect parents retreat or could also become a large home office or kids play room, good sized bedrooms with built in robes, master with walk in robe and ensuite. The laundry has ample bench and storage space, bathrooms are light and bright, there's even internal access to the home through from the remote double garage. Entertain in style

Land Size : 1000 sqm

View : <https://www.ypa.com.au/7388646>



24 FILMER PLACE RIDDELLS CREEK

DISCLAIMER

PLANS SHOWN ARE FOR MARKETING PURPOSES ONLY, ALL DIMENSIONS ARE APPROXIMATE AND NOT TO SCALE. THEY ARE SUBJECT TO ERRORS AND INACCURACIES AND NO LIABILITY WILL BE ACCEPTED. INTERESTED PARTIES SHOULD MAKE THEIR OWN INQUIRIES.