

## 18 Kipling Circuit Diggers Rest VIC

4  2  2 

Set in the heart of Diggers Rests St. Genevieve Estate on a 374m<sup>2</sup> approx. block overlooking the park is this immaculate four bedroom family home. Perfectly positioned being only a short distance to the Railway Station, newly built Early Learning Childcare Centre, Medical Centre, Diggers Rest Primary School, Football Club and only 30 minutes approx from the Melbourne CBD - the location could not be more ideal! This gorgeous home offers the family a comfortable and convenient lifestyle!

**Price** : \$ 506,000

**Land Size** : 374 sqm

**View** : <https://www.ypa.com.au/7388663>

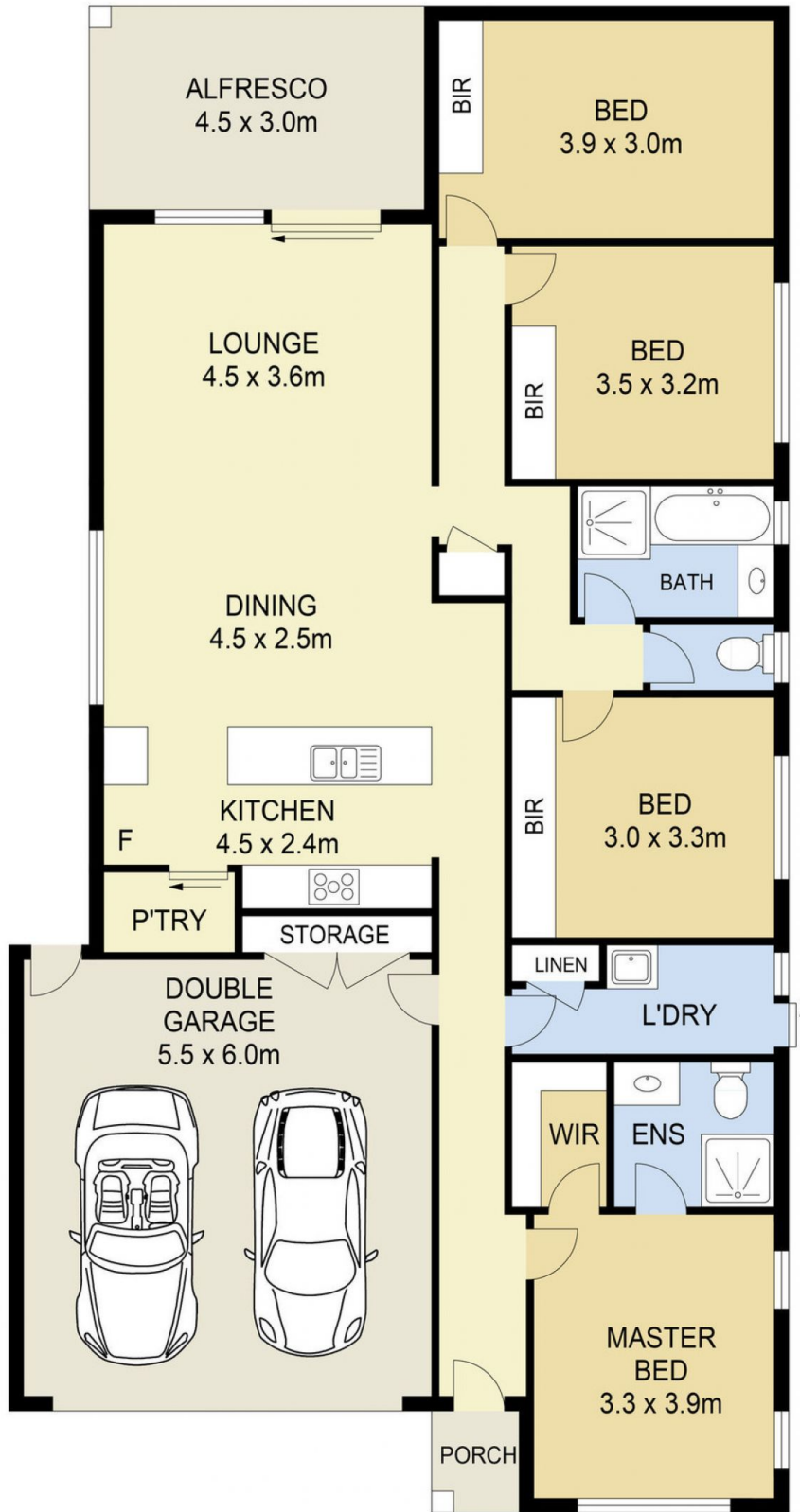
Property features include:

4 bedrooms with built in robes

Master complete with ensuite and walk in robe

Kitchen overlooking meals and living area, complete with walk in pantry, 900mm cooktop and stainless-steel appliances

Central family bathroom



## 18 KIPLING CIRCUIT, DIGGERS REST

### DISCLAIMER

PLANS SHOWN ARE FOR MARKETING PURPOSES ONLY. ALL DIMENSIONS ARE APPROXIMATE AND NOT TO SCALE. THEY ARE SUBJECT TO ERRORS AND INACCURACIES AND NO LIABILITY WILL BE ACCEPTED. INTERESTED PARTIES SHOULD MAKE THEIR OWN INQUIRIES.