

## 5 James Close Sunbury VIC

3 2 2

With a breathtaking views over Sunbury and situated on an impressive 1348m2 approx block, this special home with immaculate presentation is nestled within a prestigious and highly sought after pocket of Sunbury and is nothing short of outstanding. Simply perfect for any growing family, this big and spacious home delivers the practicality you crave and hits all the high notes with grand proportions, quality finishes and unforgettable entertaining spaces, the home creates an exceptional environment for family living.

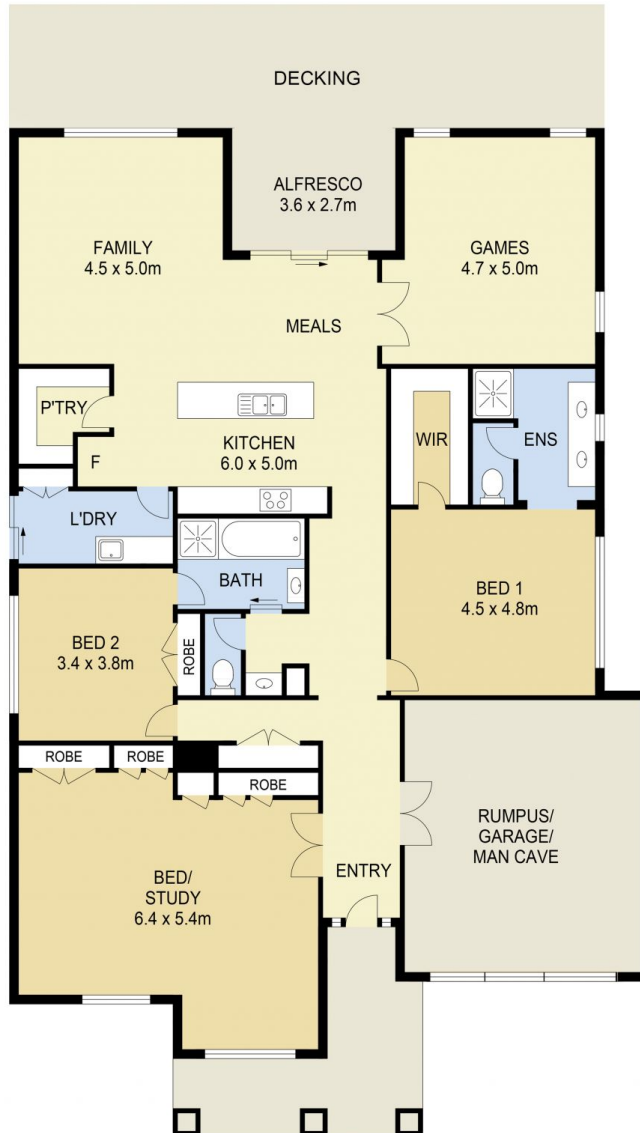
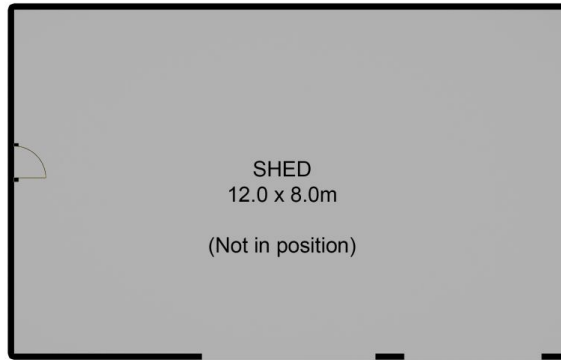
Property features include:

- ? 3 Bedrooms with built in robes - master with walk in robe & ensuite with Caesar stone benches
- ? Extra large 3rd bedroom that can easily be transformed into a multi-function room
- ? Two way central bathroom with Caesar stone benches
- ? Spacious kitchen overlooking meals and family area
- ? Kitchen complete with Caesar stone waterfall bench top,

**Price** : \$ 720,000  
**Land Size** : 1349 sqm  
**View** : <https://www.ypa.com.au/7388738>



**Lisa Totaro**  
**0410 144 215**



## 5 JAMES CLOSE, SUNBURY

**DISCLAIMER**

PLANS SHOWN ARE FOR MARKETING PURPOSES ONLY. ALL DIMENSIONS ARE APPROXIMATE AND NOT TO SCALE. THEY ARE SUBJECT TO ERRORS AND INACCURACIES AND NO LIABILITY WILL BE ACCEPTED. INTERESTED PARTIES SHOULD MAKE THEIR OWN INQUIRIES.