



10 Twin Creek Court Sunbury VIC

4 2 2

Set within a prestigious and exceptionally private pocket on an impressive 1157m2 approx block is this beautiful residence that provides the perfect tranquil family home. Designed for a lifetime of enjoyment with something for the entire family to enjoy and showcasing a flowing floorplan, tall ceilings and cleverly designed to take advantage of the northern aspect - This home really is the total package.

Property features include:

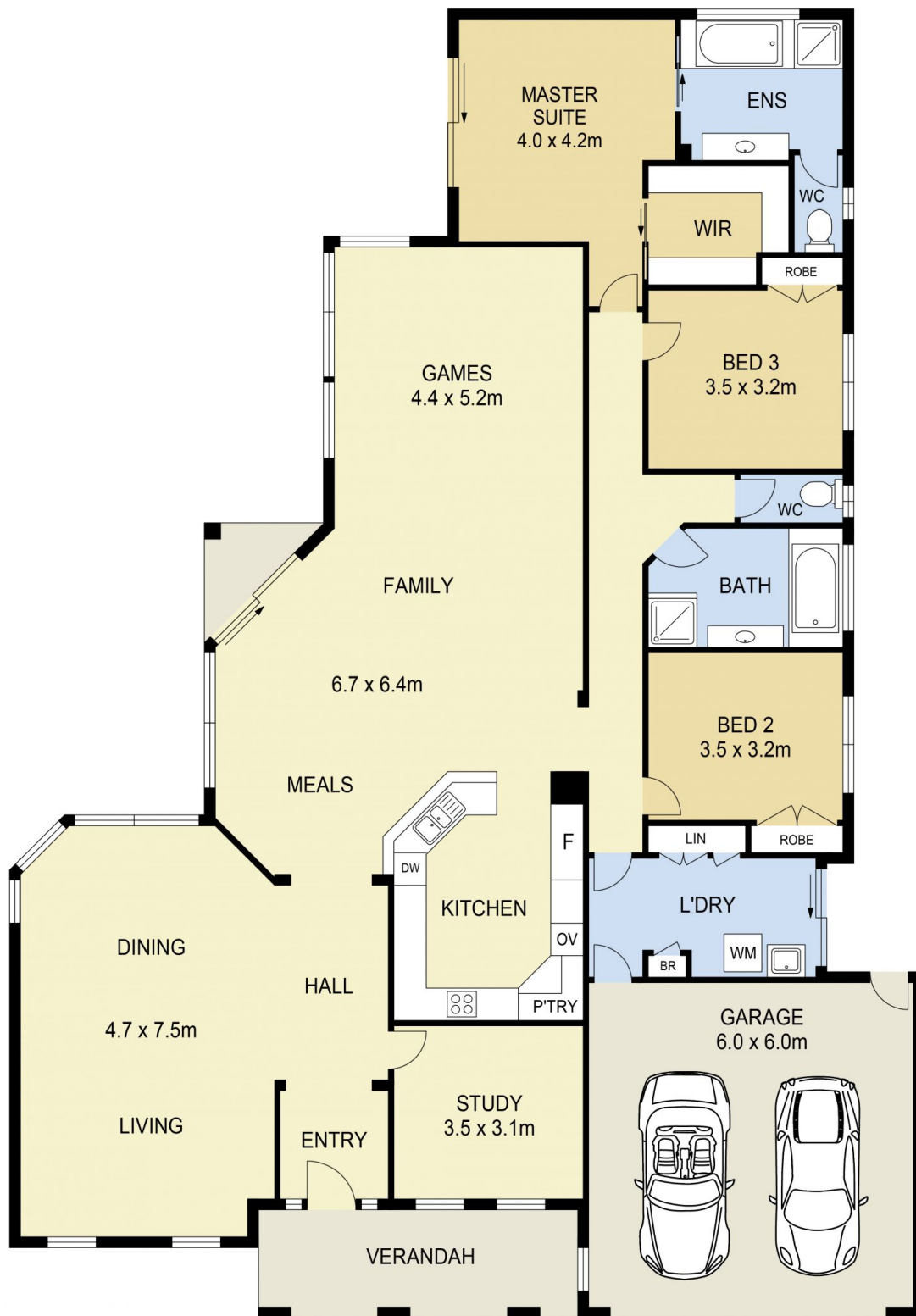
- ? 3 Bedrooms with built in robes and master complete with ensuite with separate toilet and walk in robe
- ? Large Study/4th bedroom
- ? Central bathroom with separate toilet
- ? Large kitchen overlooking family and meals area
- ? Kitchen complete with stainless steel oven, gas cooktop & dishwasher
- ? Large rumpus room

Land Size : 1157 sqm

View : <https://www.ypa.com.au/7388740>



Lisa Totaro
0410 144 215



10 TWIN CREEK COURT, SUNBURY

DISCLAIMER

PLANS SHOWN ARE FOR MARKETING PURPOSES ONLY. ALL DIMENSIONS ARE APPROXIMATE AND NOT TO SCALE. THEY ARE SUBJECT TO ERRORS AND INACCURACIES AND NO LIABILITY WILL BE ACCEPTED. INTERESTED PARTIES SHOULD MAKE THEIR OWN INQUIRIES.