



22 Burge Drive Sunbury VIC

3 2 2

Absolute convenience and security are perfectly matched by effortless functionality in this fantastic family home. Located in the popular Ashfield Estate set on a block size of 627m² approx. with a practical layout, this highly desirable opportunity is a great buy for family buyers, investors and first home buyers alike. With many added bonuses including easy access to schools, close to shops, parks, public transport, the new Rosenthal shopping complex AND only 30 minute approx. drive to Melbourne's CBD.

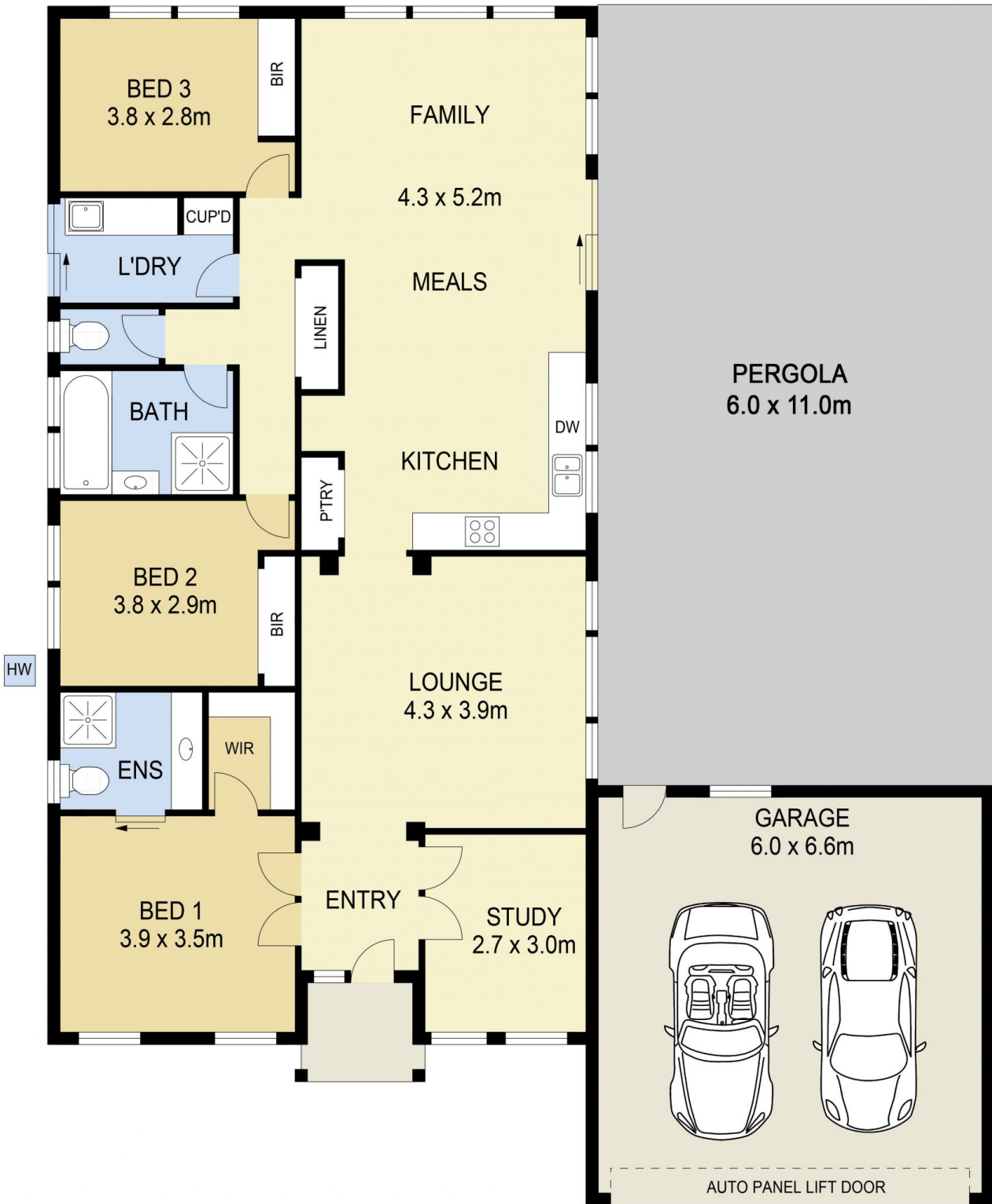
Land Size : 627 sqm
View : <https://www.ypa.com.au/7388763>

Property features include:

- ? 3 Bedrooms with BIR's
- ? Master complete with walk in robe and ensuite
- ? Spacious study off entrance
- ? Separate lounge



Lisa Totaro
0410 144 215



22 BURGE DRIVE, SUNBURY

DISCLAIMER

PLANS SHOWN ARE FOR MARKETING PURPOSES ONLY. ALL DIMENSIONS ARE APPROXIMATE AND NOT TO SCALE. THEY ARE SUBJECT TO ERRORS AND INACCURACIES AND NO LIABILITY WILL BE ACCEPTED. INTERESTED PARTIES SHOULD MAKE THEIR OWN INQUIRIES.