

8 Broomfield Avenue Sunbury VIC

4 2 2

A rare opportunity has presented itself in what is one of Sunbury's most family friendly, sought-after positions the "Brookhaven Estate." Within walking distance to Killara Primary school, public transport and only a short drive to everything Sunbury's township has to offer this one is sure to impress. Immediately inviting and set on a 588m² (approx) block, this special home is immaculately presented with neutral tones and modern touches and is sure to cater to all your needs.

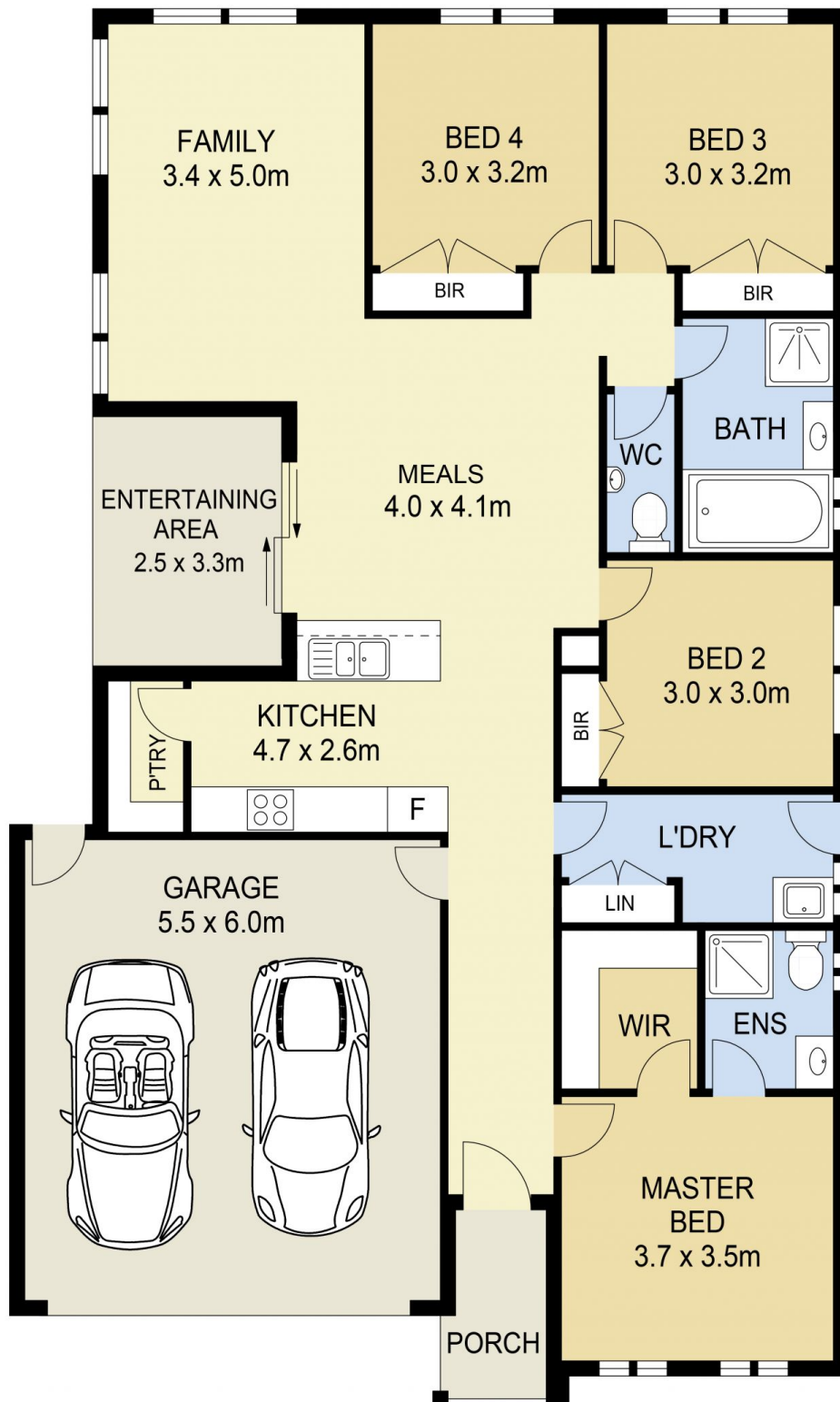
Price : \$ 530,000
Land Size : 588 sqm
View : <https://www.ypa.com.au/7388767>

Property features include:

- ? 4 Bedrooms with built in robes - master complete with walk in robe and full ensuite
- ? Central bathroom with separate toilet
- ? Spacious kitchen overlooking dining
- ? Kitchen complete with walk in pantry stainless steel dishwasher, oven and gas cooktop



Lisa Totaro
0410 144 215



8 BROOMFIELD AVENUE, SUNBURY

DISCLAIMER

PLANS SHOWN ARE FOR MARKETING PURPOSES ONLY. ALL DIMENSIONS ARE APPROXIMATE AND NOT TO SCALE. THEY ARE SUBJECT TO ERRORS AND INACCURACIES AND NO LIABILITY WILL BE ACCEPTED. INTERESTED PARTIES SHOULD MAKE THEIR OWN INQUIRIES.