



## 19 Parkview Drive Sunbury VIC

4 2 2

Like flicking through the pages of a glossy magazine comes this incredible home located within the prestigious and extremely sought-after Jacksons Hill Estate. Step inside and the attraction is instant, with quality window furnishings and fixtures & with the most amazing attention to detail throughout the home and overlooking beautiful parklands, it's safe to say that quality like this doesn't often show itself to the market place. Enjoy a relaxed, low maintenance lifestyle that many people desire, located just a short stroll to the main town centre including Metro Train Station, shops and restaurants plus a bonus for all families with Galaxy Land Park, walking tracks, public transport and local schools being almost a stone's throw away.

**View :** <https://www.ypa.com.au/7388773>

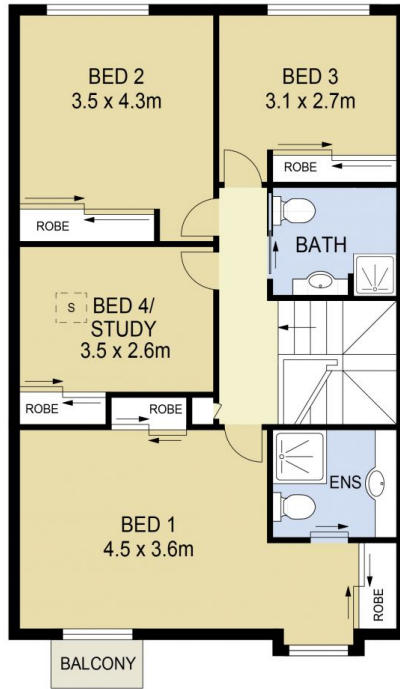


**Lisa Totaro**  
0410 144 215

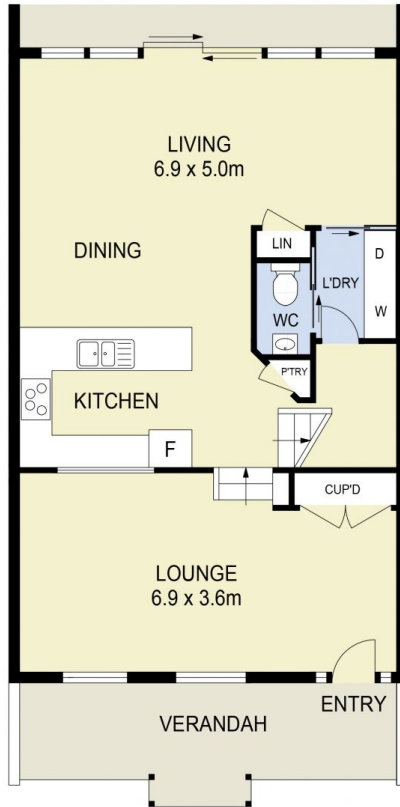
Property features include:

? 4 bedrooms with built-in-robos

? Master complete ample robe space, full ensuite &



FIRST FLOOR



GROUND FLOOR



## 19 PARKVIEW DRIVE, SUNBURY

**DISCLAIMER**

PLANS SHOWN ARE FOR MARKETING PURPOSES ONLY. ALL DIMENSIONS ARE APPROXIMATE AND NOT TO SCALE. THEY ARE SUBJECT TO ERRORS AND INACCURACIES AND NO LIABILITY WILL BE ACCEPTED. INTERESTED PARTIES SHOULD MAKE THEIR OWN INQUIRIES.