



## 391 Elizabeth Drive Sunbury VIC

3 2 2

Offering an opportunity too good to pass up! Nestled in a convenient location set on an impressive 660m<sup>2</sup> block (approx.) this exceptional and low-maintenance lifestyle awaits you. With local schools, shops and public transport all at your fingertips and Only moments to the thriving Sunbury town centre, this home offers a world of opportunities. Whether you're a first home buyer, savvy investor looking to add to your Portfolio this one is sure to tick all the boxes!

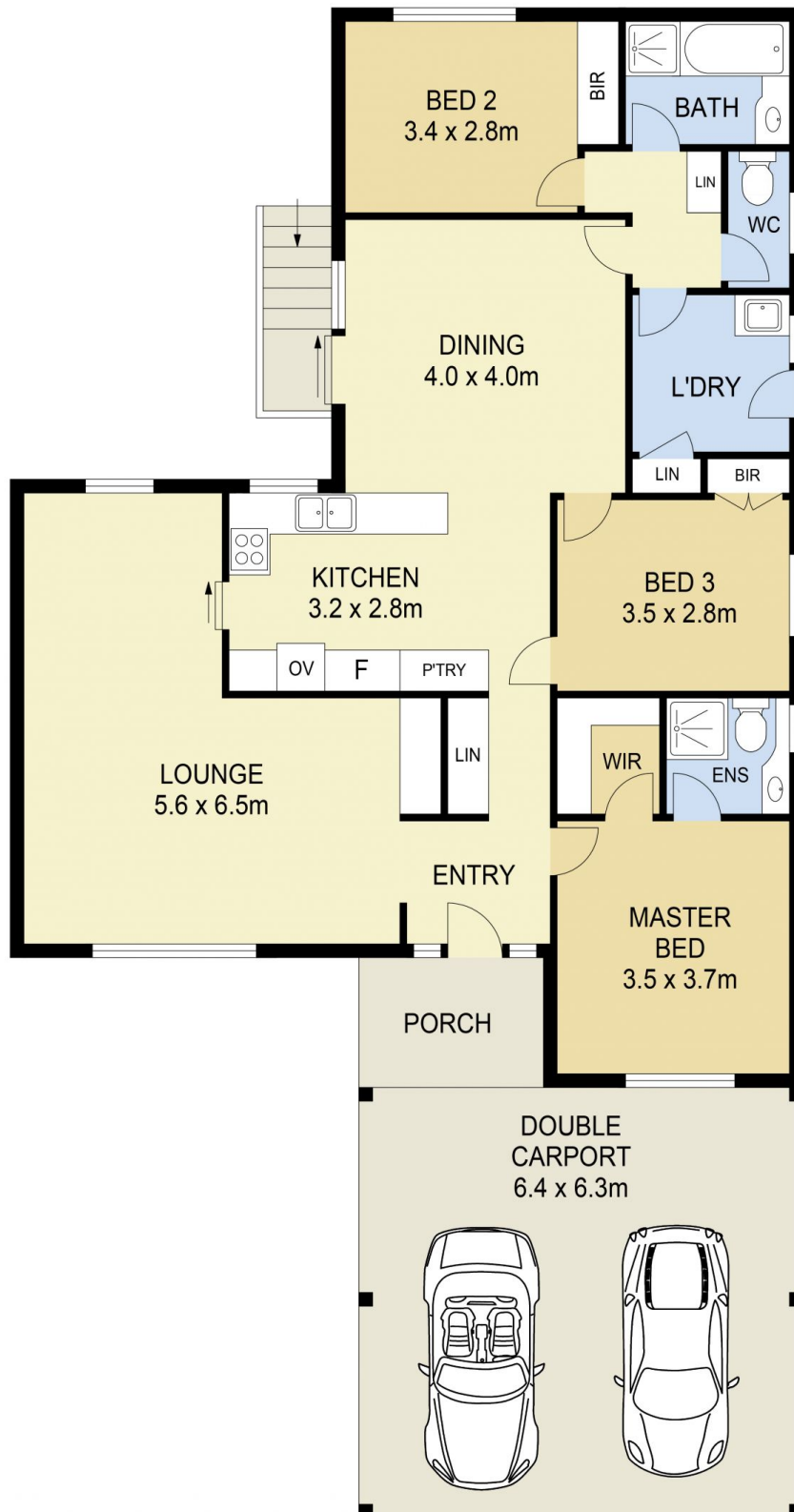
Property features include:

- ? 3 Bedrooms with built in robes - Master complete with ensuite
- ? Central bathroom with separate toilet
- ? Spacious kitchen overlooking dining and family area
- ? Kitchen complete with oven and gas cooktop
- ? Light & bright living area
- ? Ducted heating

**View** : <https://www.ypa.com.au/7388774>



**Lisa Totaro**  
**0410 144 215**



## 391 ELIZABETH DRIVE, SUNBURY

### DISCLAIMER

PLANS SHOWN ARE FOR MARKETING PURPOSES ONLY. ALL DIMENSIONS ARE APPROXIMATE AND NOT TO SCALE. THEY ARE SUBJECT TO ERRORS AND INACCURACIES AND NO LIABILITY WILL BE ACCEPTED. INTERESTED PARTIES SHOULD MAKE THEIR OWN INQUIRIES.