



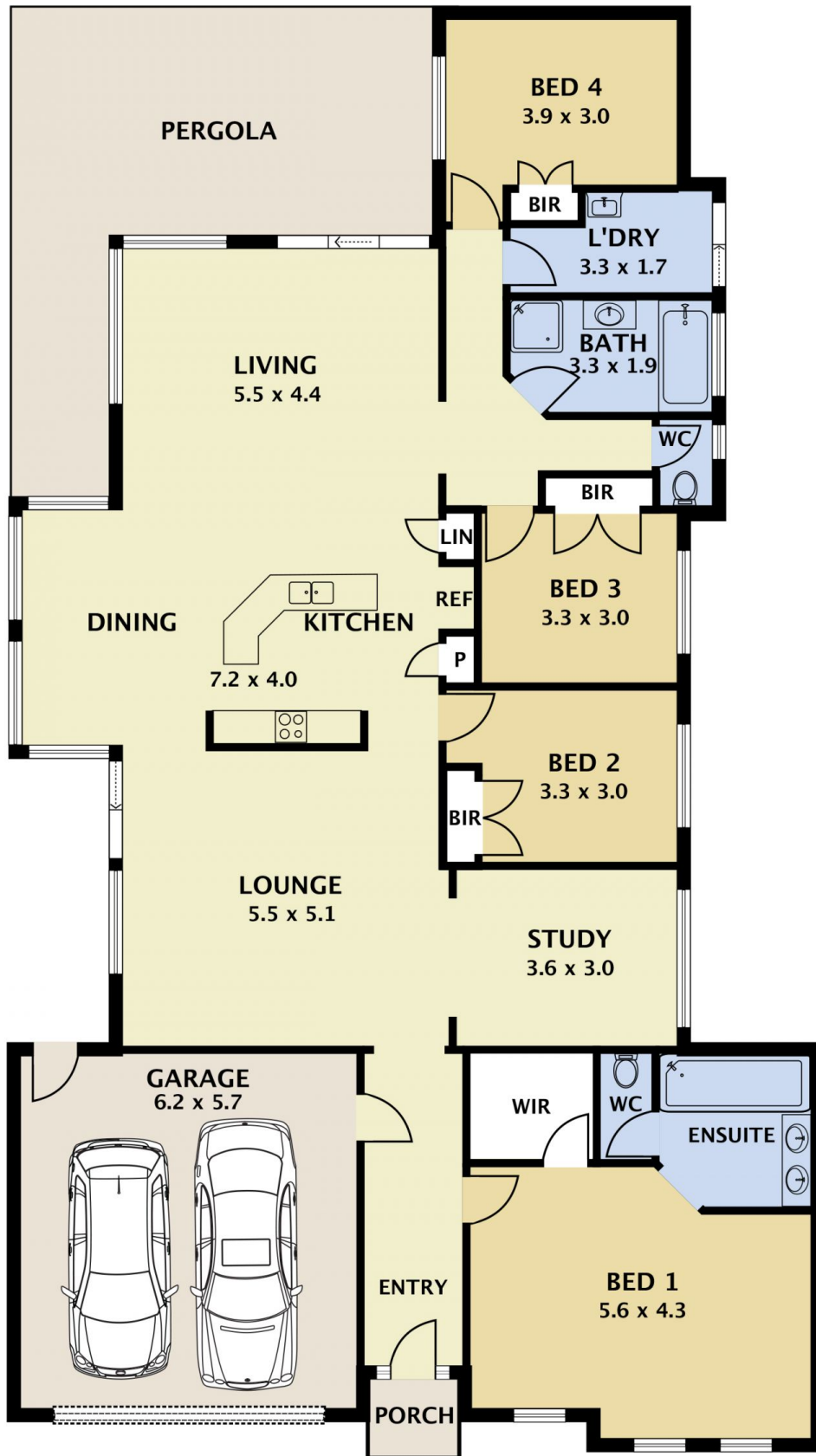
## 9 Grapeview Grove Sunbury VIC

4 2 2

Offering style, class and sophistication this dress circle property is simply divine. A rare gem, this stunning home offers an enviable lifestyle with spectacular views over Jacksons Creek and the historic Rupertswood mansion that will undoubtedly last forever. On a generous block of 1299m<sup>2</sup> approximately meticulously thought out, renovated, and maintained with too many features to mention, this divine property comprises of:

**Price** : \$ 790,000  
**Land Size** : 1299 sqm  
**View** : <https://www.ypa.com.au/7388775>

- ? Palatial master bedroom with the most glorious ensuite including double rain shower
- ? Family bathroom in keeping with the ensuite and boasting free standing bath
- ? All 4 bedroom have BIR's, master with WIR
- ? Open plan family, meals and kitchen tastefully renovated with stone benchtops, island bench and quality appliances
- ? A generous second formal living zone plus separate



## 9 Grapeview Grove Sunbury

**DISCLAIMER**

PLANS SHOWN ARE FOR MARKETING PURPOSES ONLY. ALL DIMENSIONS ARE APPROXIMATE AND NOT TO SCALE. THEY ARE SUBJECT TO ERRORS AND INACCURACIES AND NO LIABILITY WILL BE ACCEPTED. INTERESTED PARTIES SHOULD MAKE THEIR OWN INQUIRIES.