



13 Fingleton Crescent Sunbury VIC

3  2  2 

Peacefully nestled in the sought-after Ashfield Estate set on a 396m² (approx.) block, there is immediately a lot to love about this property. Offering spacious living areas inside and out, light and bright throughout & ready for the entire family to enjoy. Positioned to provide a lifestyle of convenience - being within close proximity to schools, bus stops, sporting facilities and with the added bonus of parklands & walking tracks at your fingertips. This home will be sure to tick all the boxes.

Property features include:

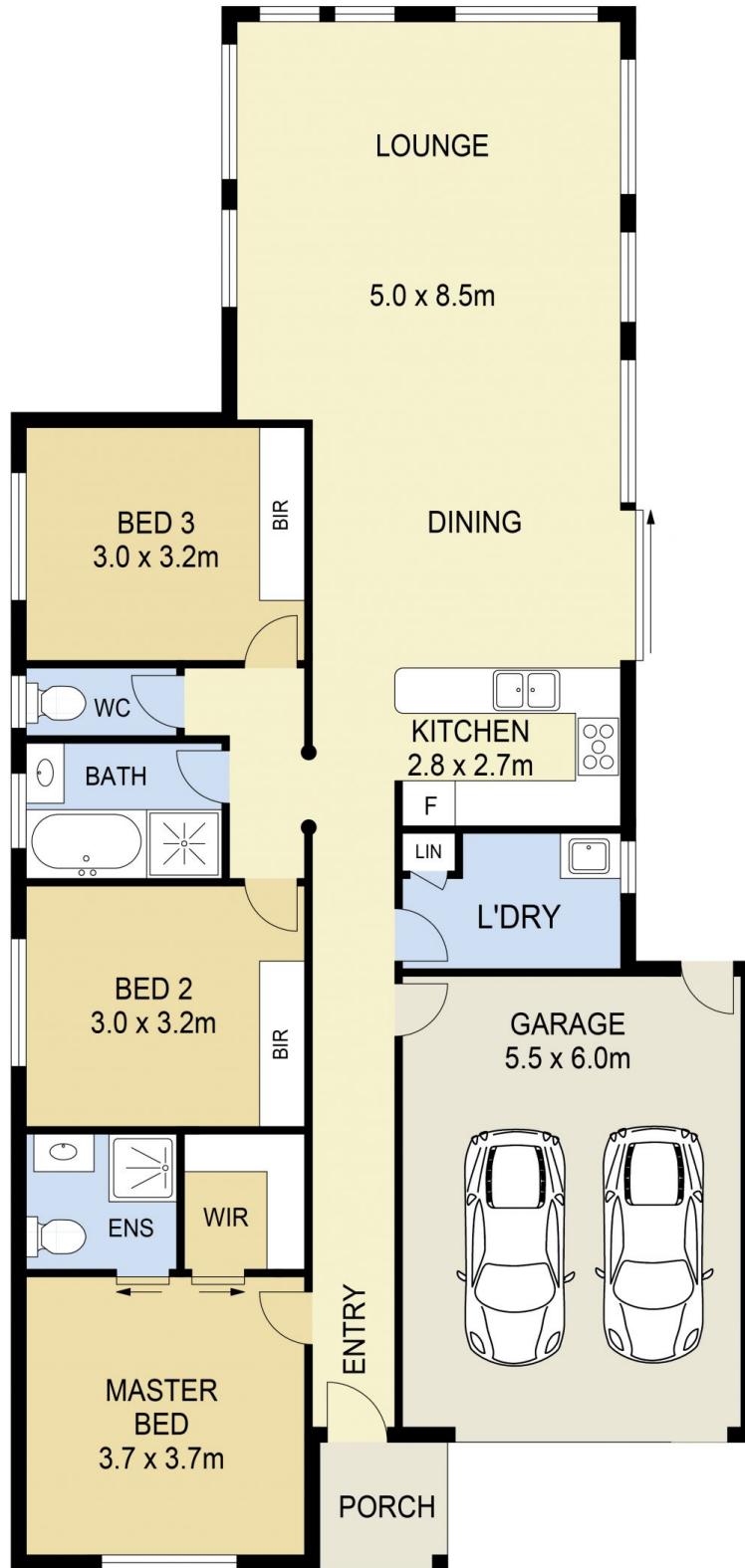
- ? 3 Bedrooms with built in robes - Master complete with ensuite
- ? Central bathroom with separate toilet
- ? Formal living area
- ? Spacious kitchen overlooking dining and family lounge
- ? Kitchen complete with oven & gas stove

Price : \$ 490,000

View : <https://www.ypa.com.au/7388778>



Lisa Totaro
0410 144 215



13 FINGLETON CIRCUIT , SUNBURY

DISCLAIMER

PLANS SHOWN ARE FOR MARKETING PURPOSES ONLY. ALL DIMENSIONS ARE APPROXIMATE AND NOT TO SCALE. THEY ARE SUBJECT TO ERRORS AND INACCURACIES AND NO LIABILITY WILL BE ACCEPTED. INTERESTED PARTIES SHOULD MAKE THEIR OWN INQUIRIES.