



## 18 Marsh Crescent Sunbury VIC

3  2  1 

There is immediately a lot to love about this property which quickly becomes apparent from the moment you enter this special home. Nestled in a quiet, secluded court location in the much sought after Ashfield estate this low maintenance property sits on a 323m<sup>2</sup> block and is within close proximity to all amenities including schools, child care facilities, public transport, beautiful reserves and parklands, the thriving township, new Rosenthal shopping centre and easy access to the Calder Freeway. Whether you're a first home buyer, retiree or the clever investor, this home is ready to move in and only needs you to complete the package!

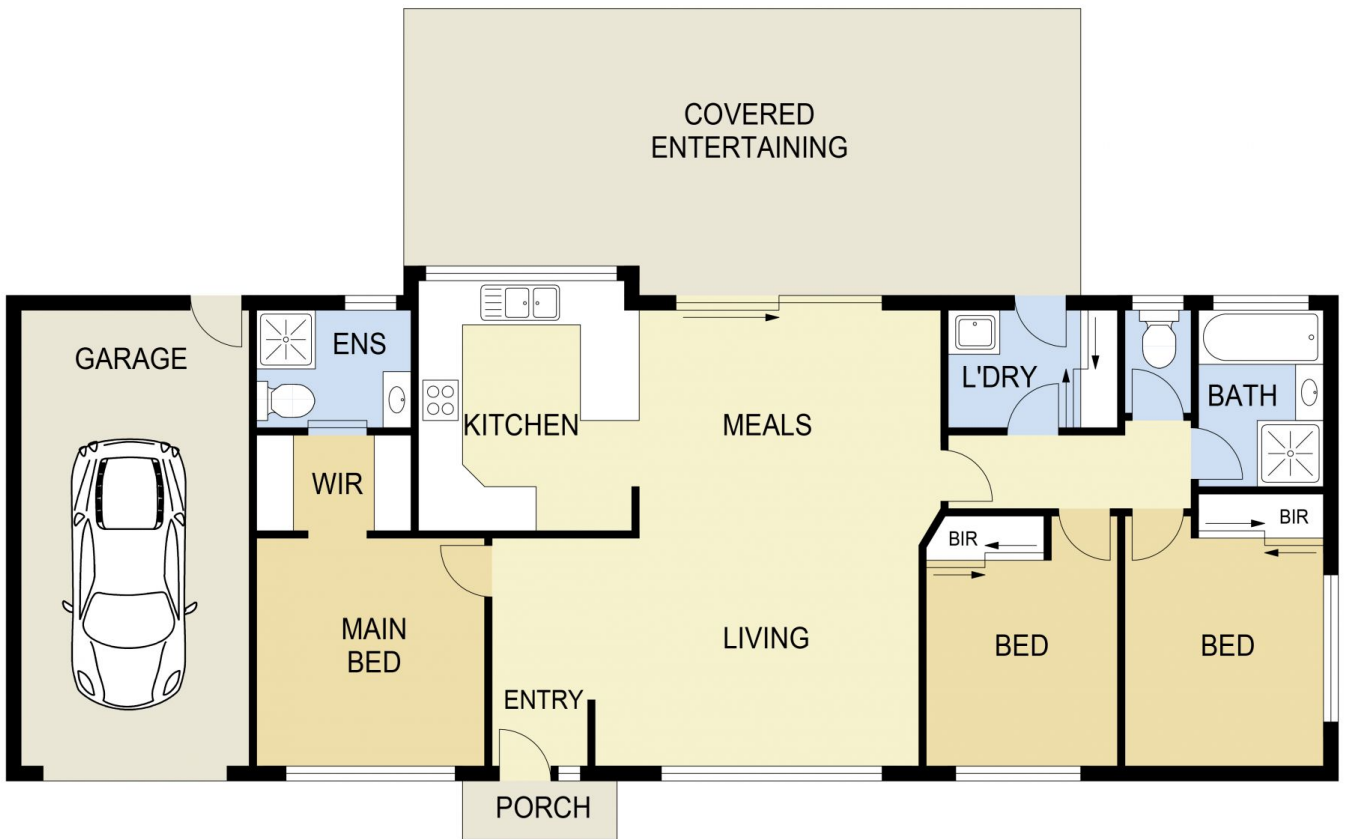
Property features include:

- ? 3 Bedrooms with built in robes - master complete with walk in robe and ensuite
- ? Central bathroom with separate toilet
- ? Light filled kitchen overlooking dining

**Price** : \$ 429,000  
**Land Size** : 323 sqm  
**View** : <https://www.ypa.com.au/7388791>



**Lisa Totaro**  
0410 144 215



## 18 MARSH CRESCENT, SUNBURY

**DISCLAIMER**

PLANS SHOWN ARE FOR MARKETING PURPOSES ONLY. ALL DIMENSIONS ARE APPROXIMATE AND NOT TO SCALE. THEY ARE SUBJECT TO ERRORS AND INACCURACIES AND NO LIABILITY WILL BE ACCEPTED. INTERESTED PARTIES SHOULD MAKE THEIR OWN INQUIRIES.