



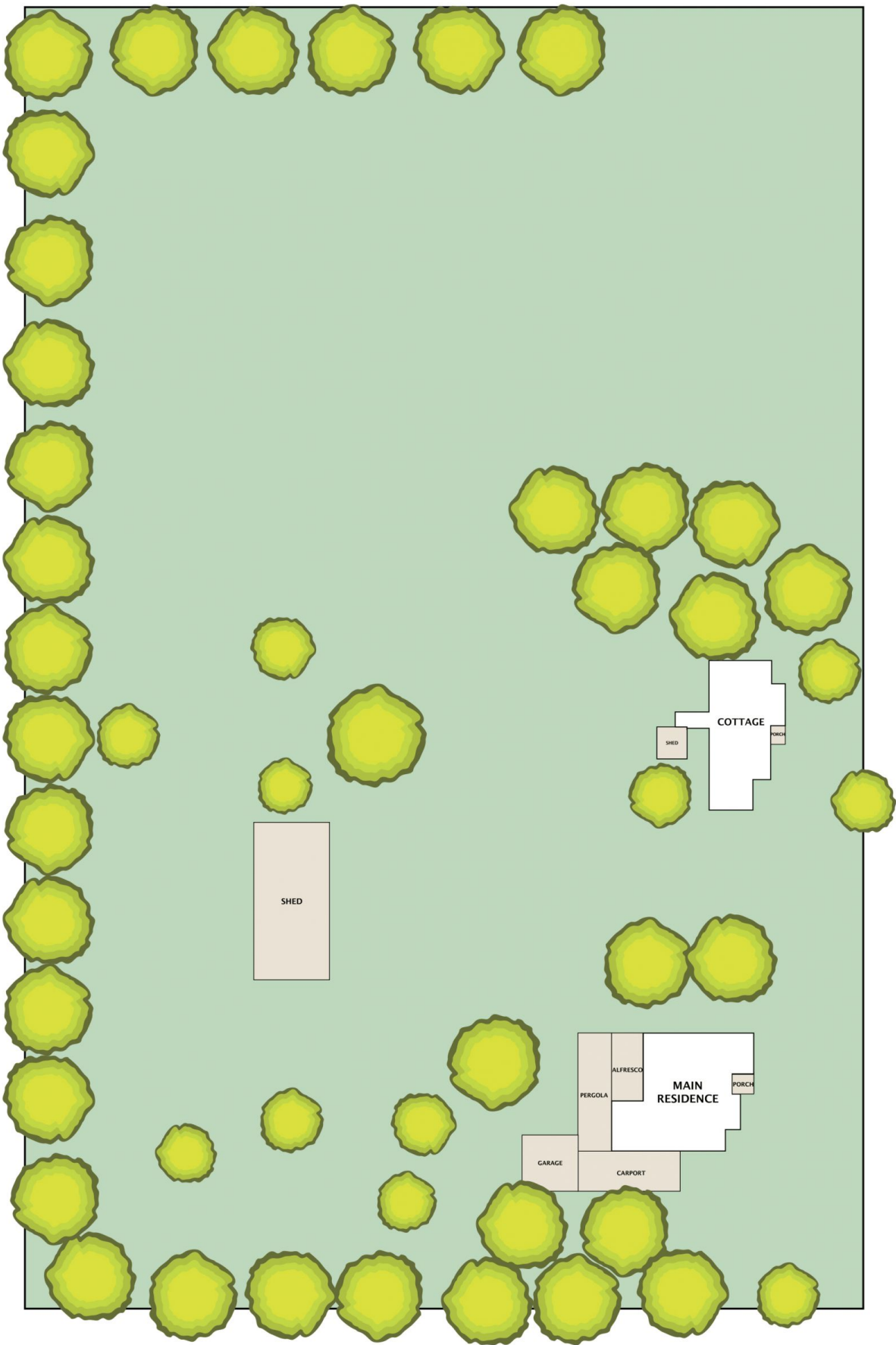
3 Couzens Lane Romsey VIC

5 🏠 3 🚗 3 🚗

Built in the early 1950's the homes and surrounding grounds have been a labour of love for the entire family over 3 generations. Proudly presented to the market for the very first time is this country retreat only a stone's throw from the Township of Romsey within close proximity to all amenities including Romsey Primary School, child care facilities, cafes, speciality stores, medical centre and sporting facilities. Enjoy life at a slower pace with the luxury of space on this enormous allotment of approximately 1.580 Ha, offering not only 1 special home, but 2 - giving one lucky buyer an endless amount of possibilities, options and scope. Situated in an incredible location, in the heart of the stunning Macedon Ranges, this property is ready to make lasting memories.

Land Size : 1.58 ha
View : <https://www.ypa.com.au/7388794>

Property 1 features include:
 ? Stunning Californian Bungalow style residence with 3



3 Couzens Lane Romsey - Site Plan

DISCLAIMER
 PLANS SHOWN ARE FOR MARKETING PURPOSES ONLY. ALL DIMENSIONS ARE APPROXIMATE AND NOT TO SCALE. THEY ARE SUBJECT TO ERRORS AND INACCURACIES AND NO LIABILITY WILL BE ACCEPTED. INTERESTED PARTIES SHOULD MAKE THEIR OWN INQUIRIES.



3 Couzens Lane Romsey

DISCLAIMER
 PLANS SHOWN ARE FOR MARKETING PURPOSES ONLY, ALL DIMENSIONS ARE APPROXIMATE AND NOT TO SCALE. THEY ARE SUBJECT TO ERRORS AND INACCURACIES AND NO LIABILITY WILL BE ACCEPTED. INTERESTED PARTIES SHOULD MAKE THEIR OWN INQUIRIES.