



## 16 Newnham Drive Romsey VIC

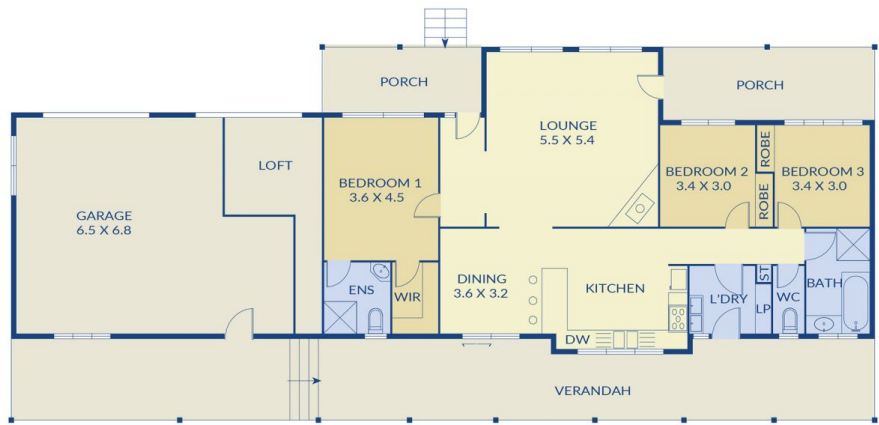
3  2  5 

Make the most of this golden opportunity for life at a slower pace & the luxury of space on this enormous allotment of just over 1-acre. Established and private from the front and a parklike setting out the back, this is truly a relaxed lifestyle on offer. This 3-bedroom home has great bones and is generously proportioned but could use some updating internally - so bring your creative flair! Priced to entice, the home comprises of:

**Land Size** : 4048 sqm

**View** : <https://www.ypa.com.au/7388811>

- ? 3 Bedrooms with Robes
- ? Master with WIR and ensuite
- ? Spacious living room with ambiance of wood fire heating
- ? Huge timber kitchen overlooks the meals area with sliding door external access
- ? Family bathroom, separate WC & laundry
- ? Perfectly positioned with wide gated side access either side of the home



26sq  
Total Approx

Sizing is an approximate guide, prospective purchasers are advised to make their own enquiries.



ypa

16 Newnham Drive, Romsey