



15 McCabe Crescent Sunbury VIC

4 2 2

Peacefully nestled in the sought-after Ashfield Estate set on a block size of 651m2 approx. Enjoy extreme comfortability, generous proportions and a great floorplan-ideal for the growing family.

A lifestyle of absolute convenience is assured, being just a minutes stroll to the peaceful Century Park and close proximity to both Primary & Secondary schools, local shops, public transport schools, parks, public transport, the new Rosenthal shopping complex & extensive walking trails make this property the ideal fit for you and your family!

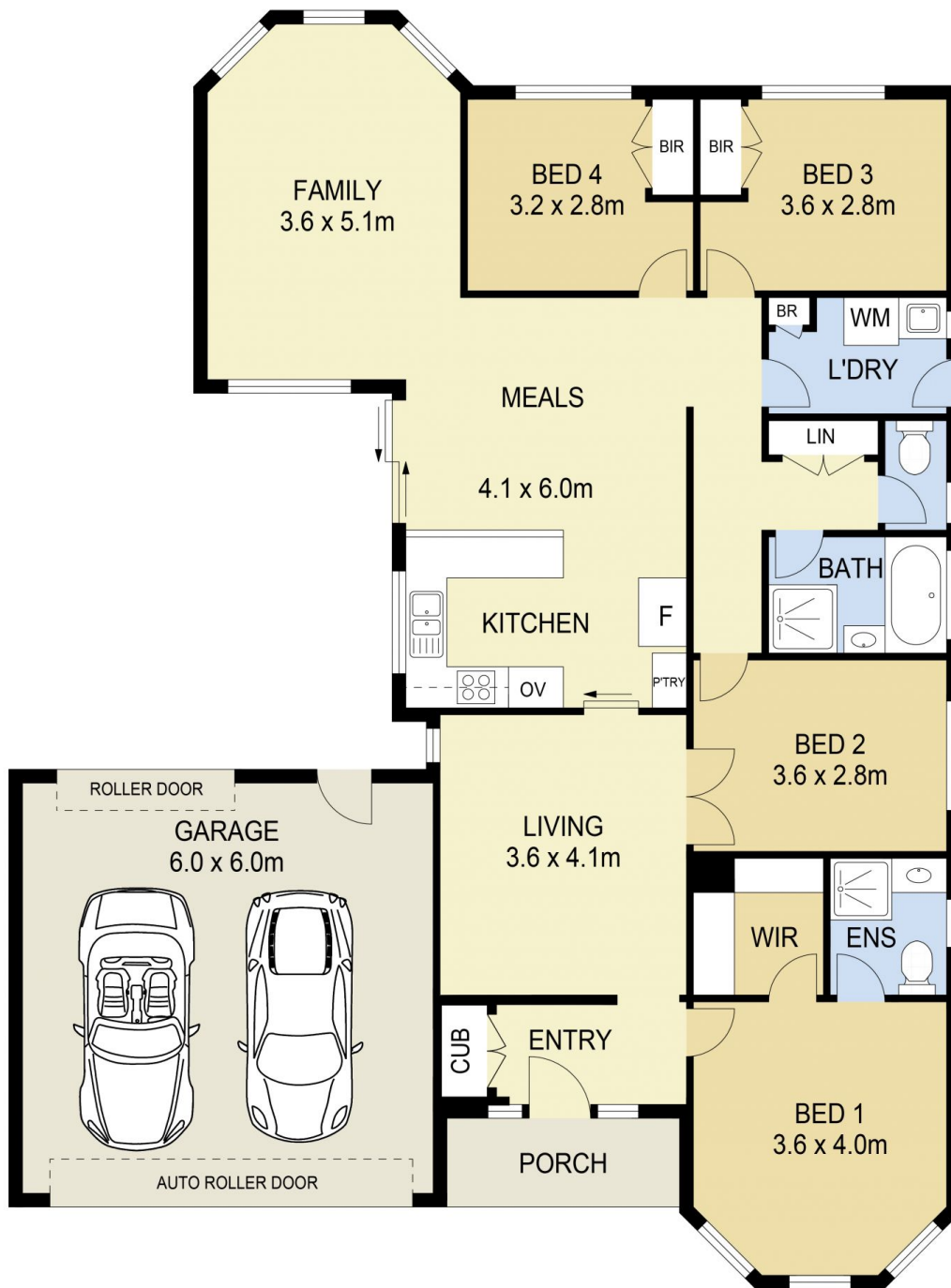
Property Features:

- ? 4 Bedrooms all with built in robes, master complete with walk in robe and ensuite and bay windows
- ? Central bathroom with separate toilet
- ? Multiple living areas to maximise the comfort of the whole

Price : \$ 548,000
Land Size : 651 sqm
View : <https://www.ypa.com.au/7388815>



Lisa Totaro
0410 144 215



15 MCCABE CRESCENT, SUNBURY

DISCLAIMER

PLANS SHOWN ARE FOR MARKETING PURPOSES ONLY. ALL DIMENSIONS ARE APPROXIMATE AND NOT TO SCALE. THEY ARE SUBJECT TO ERRORS AND INACCURACIES AND NO LIABILITY WILL BE ACCEPTED. INTERESTED PARTIES SHOULD MAKE THEIR OWN INQUIRIES.