

20 Westward Ho Drive Sunbury VIC

3  2  2 

This home is ideally located in the popular Goonawarra Estate, only a stroll away from nearby parklands & schools, and a short drive to Sunbury's town centre with fabulous cafes, eateries and shopping. Situated on a generous block size of 670m² (approx) with plenty of space for the kids to play & to entertain. If you're looking for a move in ready home this is one not to let pass you by!

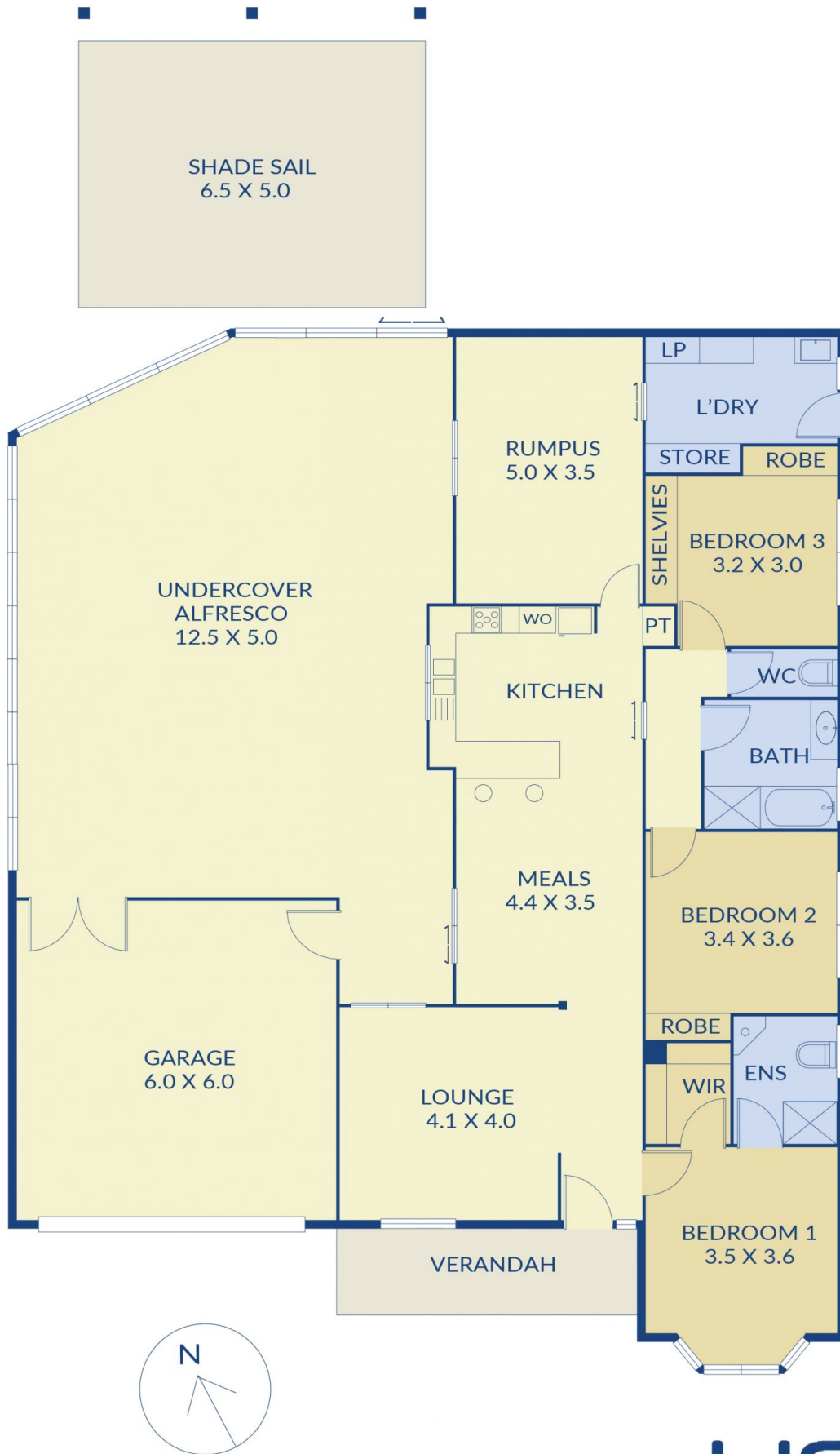
Price : \$ 480,000
Land Size : 670 sqm
View : <https://www.ypa.com.au/7388823>

Property features:

- ? 3 Bedrooms all with built in robes, master complete with walk-in robe and ensuite
- ? Main bathroom with separate toilet
- ? Open plan kitchen, living and dining area
- ? Kitchen complete with dishwasher, gas cooktop and oven
- ? 2 separate living areas
- ? Ducted heating and split system cooling
- ? Laundry with external access



Lisa Totaro
0410 144 215



32 sq
Total Approx

Sizing is an approximate guide, prospective purchasers are advised to make their own enquiries.



20 Westward Ho Drive, Sunbury