



18 Marsh Crescent Sunbury VIC

3  2  1 

This low maintenance family home is situated in a quite court in the beautiful Ashfield estate, close to Sunbury Downs Secondary College, Langama Park, Eric Boardman Stadium, 5-minute (approx.) drive into Sunbury CBD, easy access onto the Calder Freeway and surrounded by beautiful parklands for children to enjoy. Its the complete package.

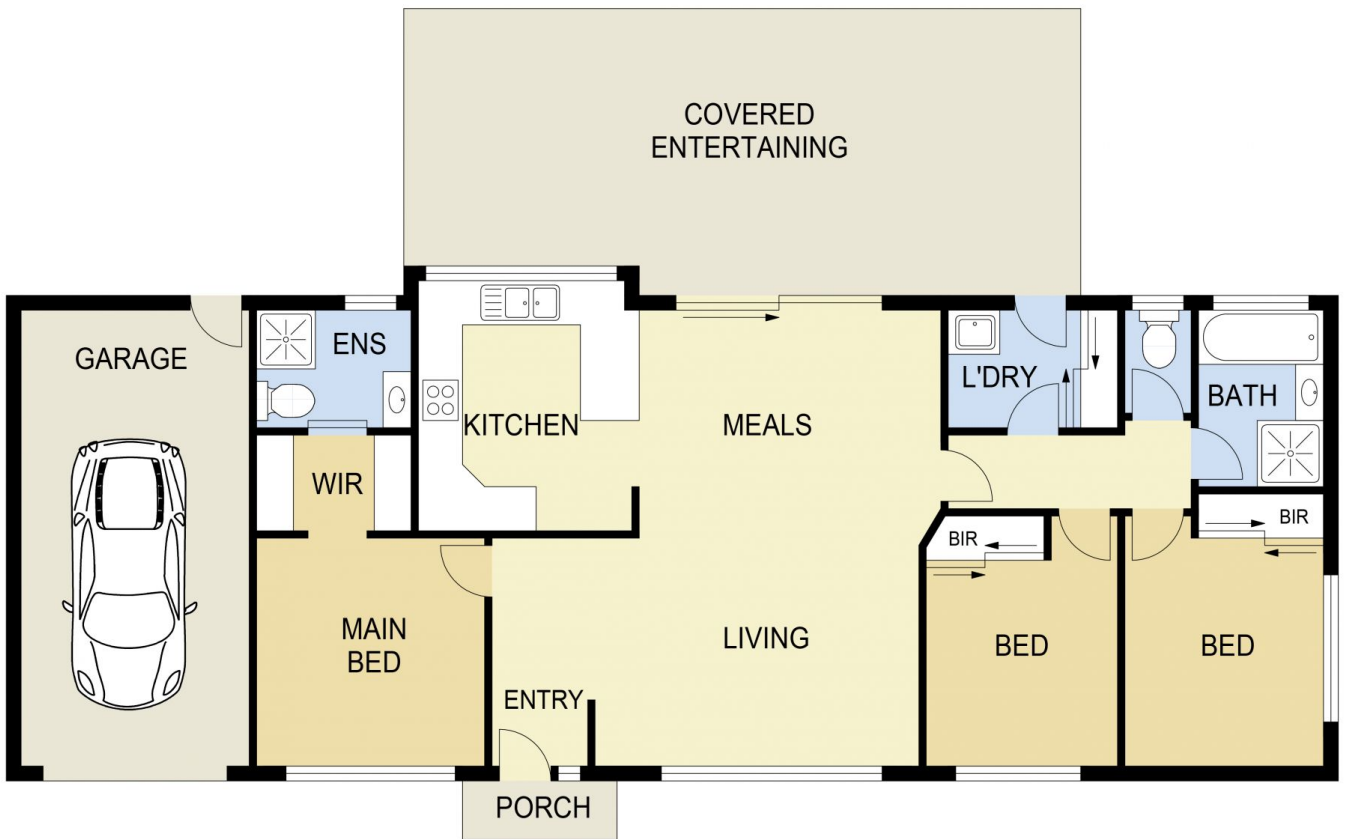
Property features:

- ? 3 Bedrooms with built in robes - master complete with walk in robe and ensuite
- ? Central bathroom with separate toilet
- ? Light filled kitchen overlooking dining
- ? Generous lounge area
- ? Laundry with outside access
- ? Evaporative cooling
- ? Wall heater

View : <https://www.ypa.com.au/7390122>



Tanya Campbell
03 9744 4428



18 MARSH CRESCENT, SUNBURY

DISCLAIMER

PLANS SHOWN ARE FOR MARKETING PURPOSES ONLY. ALL DIMENSIONS ARE APPROXIMATE AND NOT TO SCALE. THEY ARE SUBJECT TO ERRORS AND INACCURACIES AND NO LIABILITY WILL BE ACCEPTED. INTERESTED PARTIES SHOULD MAKE THEIR OWN INQUIRIES.