



21 Somerville Lane Riddells Creek VIC

3 2 2

Nestled in the foothills of the Macedon Ranges, the family home offers a great blend of indoor and outdoor living spaces ready for you to relax and enjoy. Located close to sporting facilities, cafes, restaurants, primary school and train station.

Property features:

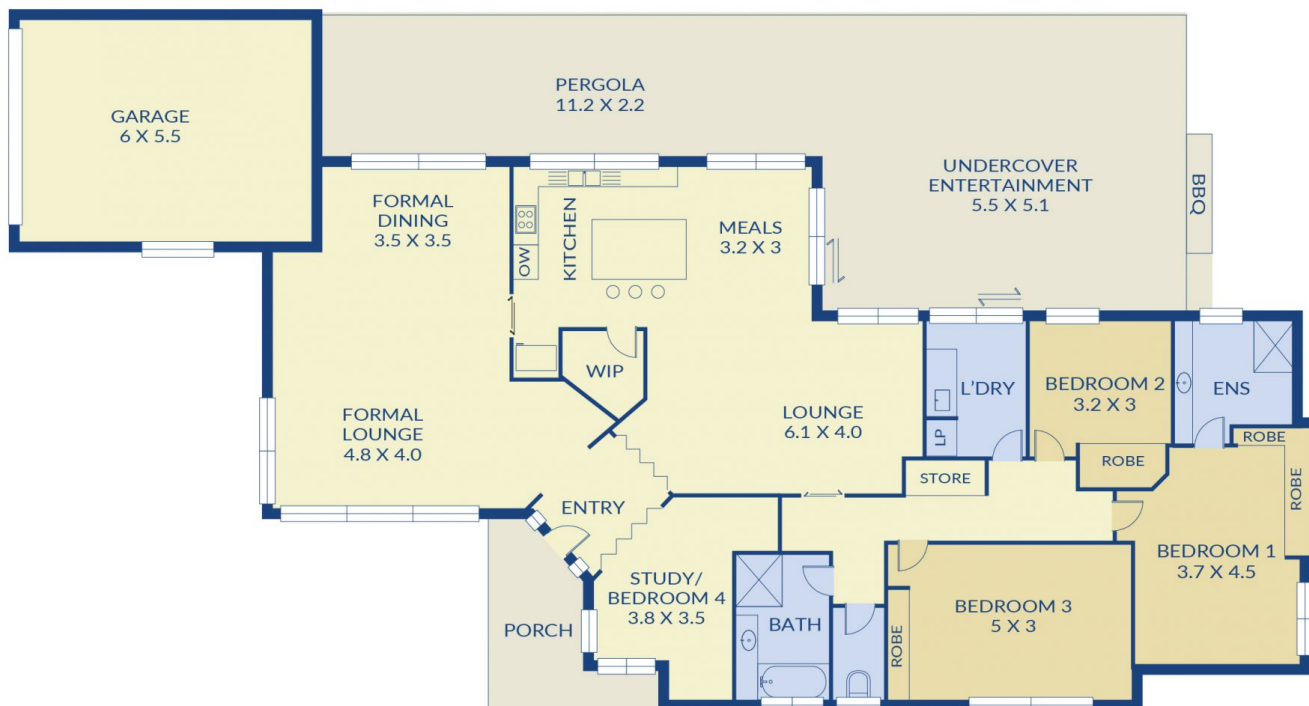
- ? 3 bedrooms with BIR's
- ? Master with ensuite
- ? Large study
- ? Hostess kitchen with double oven, dishwasher & walk in pantry
- ? Open plan meals and family living area
- ? Formal lounge
- ? Formal dining
- ? Central family bathroom
- ? Slab heating, multiple split systems
- ? Ducted vacuum

Land Size : 882 sqm

View : <https://www.ypa.com.au/7390123>



Tanya Campbell
03 9744 4428



(NOT IN POSITION)



ypa

21 Somerville Ln, Riddells Creek