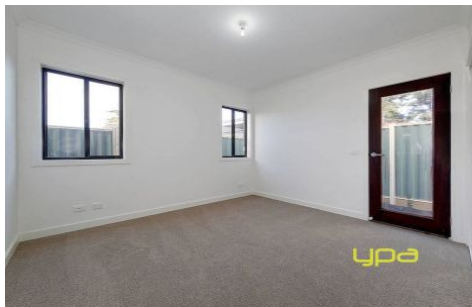


ypa



3/63 Victoria Road SYDENHAM VIC

3  1  2 

Situated within walking distance to schools, train station, parks and watergardens shopping centre sits this brand new unit with high quality fixtures and fittings that will guarantee to impress the fussiest of buyers.

View : <https://www.ypa.com.au/7391157>

Bright kitchen with ceaser stone bench tops, glass splashbacks, SS appliances, soft close draws and tupac cupboards adjoining open meals/family area with porcelain tiles.

Further features include double remote garage, 2.7m ceilings, ducted heating, evaporative cooling, square set cornices and a whole lot of extras. Enquire today!