

## 25 Perceval Crescent TAYLORS LAKES VIC

5  3  2 

Offering a timeless elegance and style to impress on this grand scale home set on a desirable corner block of approximately 707m<sup>2</sup> which comprises a architectural design with city views providing a full comfort and style of living all year around.

Home comprising with the following:

Once you enter the home you are enticed by large living areas throughout which also includes four great sized bedrooms which are all located upstairs, and the fifth bedroom down stairs offers full en-suite with built in robes.

Downstairs the natural light/downlights embraces the generous living arena which includes three spacious living zones and offers complete luxury of space and beauty.

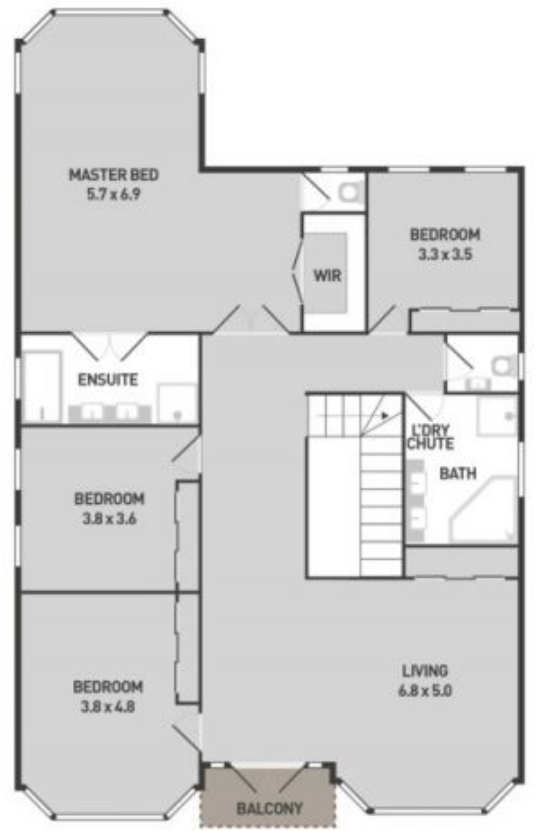
**Land Size** : 707 sqm

**View** : <https://www.ypa.com.au/7391225>

A large open plan kitchen with Granite bench tops, 900mm



GROUND FLOOR



FIRST FLOOR

