



## 5 Field Street RYE VIC

4 2 2

Add your personal touch!

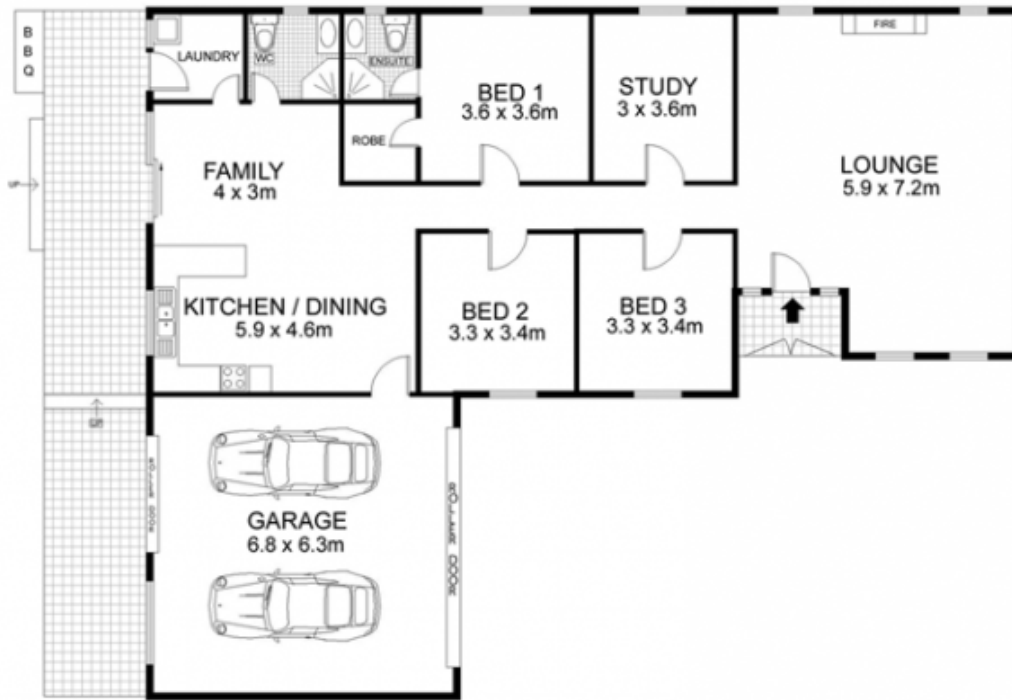
This large limestone property has been built with painstaking attention to detail, but unfortunately it needs someone with a vision to finish off the work started. With a tiled floor throughout, this property has had most of the tricky work done, and just needs some cosmetic touch ups.

The kitchen has been built with granite worktops but some elbow grease in the right areas could get it from looking good to looking great! This property consists of four good sized bedroom, master with en-suite and walk in robes. Also comprising two large living areas, including a huge rumpus or formal lounge with open fire place & a separate family/meals area.

A large double garage with drive through access into the

**Land Size** : 720 sqm

**View** : <https://www.ypa.com.au/7392272>



Scale in metres. Indicative only. Dimensions are approximate. All information contained herein is gathered from sources we believe to be reliable. However we cannot guarantee its accuracy and interested persons should rely on their own enquiries.

INT : 177 m<sup>2</sup>  
EXT : 39 m<sup>2</sup>



5 Field Street, Rye

Floor plan by www.topsnap.com 1300 867 762