



215-217 Palmerston Avenue DROMANA VIC

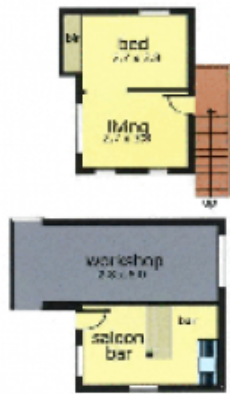
5 🏠 3 🚿 2 🚗

PRICED FOR IMMEDIATE SALE!!! Few can compare- on a little under an acre, this stunning character filled home enjoys glorious bay vistas over Port Phillip Bay from its favorable position perched high on the allotment. Built in 1885 by well-known local pioneering identity Walter Gibson and brimming with charming period details, this 5 bedroom, 3 bathroom Victorian mansion represents timeless elegance and exquisite design. Sprawling over one level, Bayview House has been sympathetically enhanced to deliver flexible family living highlighted by grand living rooms, 6 fireplaces, 14 foot ceilings, heritage colours and Baltic flooring. Enviably nestled amidst glorious gardens, this landmark home was previously a luxury B&B, once being showcased on 'The Great Outdoors.' Much-loved and admired by many, this property also boasts a character-filled cottage; comprising of a bedroom, living space and a bar/ study. Further

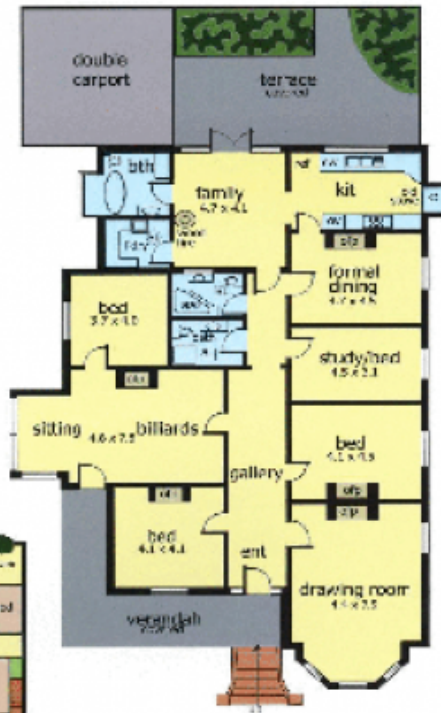
View : <https://www.ypa.com.au/7392369>



Ben Nutbean
0413 125 996



Studio over Saloon



Main residence approx: 25 squares
 Studio / saloon: 4 squares
 Carport: 3.5 squares
 Verandah / terrace : 7.5 squares
 Total: 40 squares approx.