



## 88 Nepean Highway DROMANA VIC

3 1 1

Only a few hundred metres from the blues of Port Phillip Bay is this charming three bedroom home. Conveniently set on a service road and enjoying an abundance of natural light, this brick-veneer residence would be the ideal coastal weekender, fuss-free investment or everyday retreat.

**Land Size** : 562 sqm

**View** : <https://www.ypa.com.au/7392697>

### Featuring:

Light and bright living zones and bedrooms courtesy of floor to ceiling windows

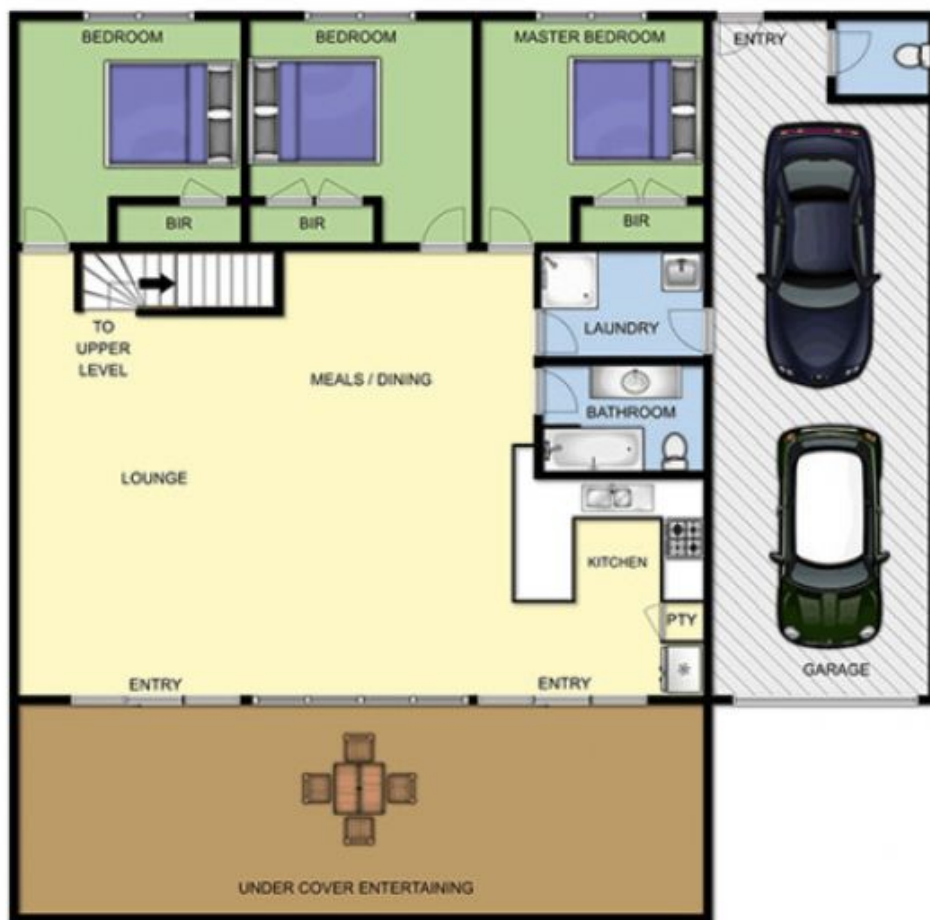
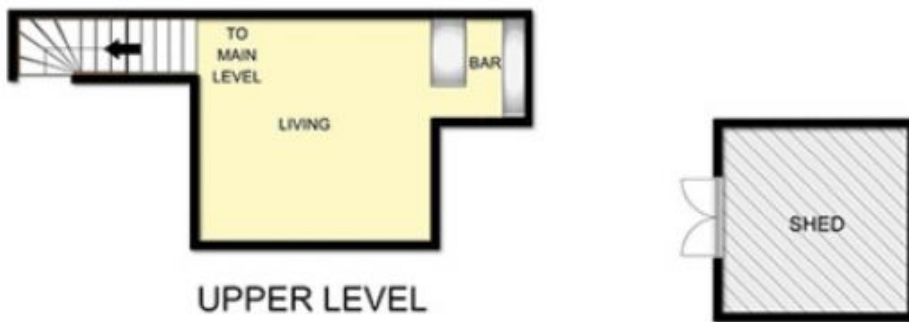
Three large bedrooms, all with built-in robes

Neutral tones and finishings enhance the seaside feel

Absolutely immaculate interiors coupled with low-maintenance grounds

A host of outdoor entertaining options including a front courtyard leading off the kitchen

Expansive undercover alfresco area, perfect for



MAIN LEVEL



# 88 NEPEAN HWY DROMANA

This image is an artistic representation. It is the responsibility of all interested parties to verify all data depicted and omitted.