



**2/95 Eastbourne Road ROSEBUD VIC**

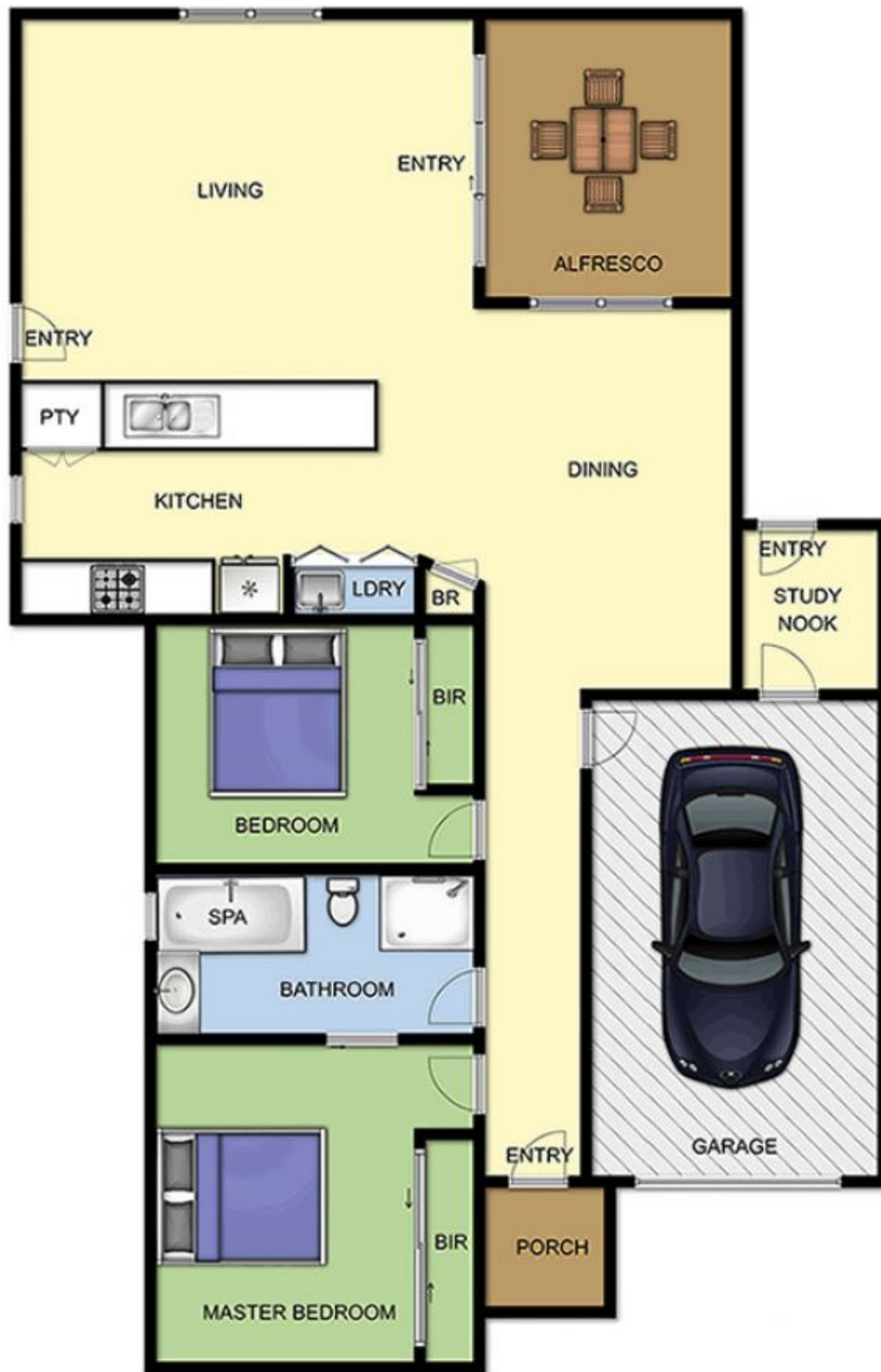
**2**  **1**  **1** 

Absolutely immaculate and in a select block of four, this light-filled villa is your key to modern Peninsula living. With neutral interiors and spacious rooms, this near-new home is also so convenient to local amenities and the bay.

**Land Size** : 272 sqm  
**View** : <https://www.ypa.com.au/7392773>

Featuring:

- Light and bright living zones
- Two spacious bedrooms, plus a dedicated study/ hobby room
- Open plan, modern kitchen with plentiful storage adjoining the living area
- Further enhanced by high ceilings and quality fixtures and finishes
- Coastal inspired design, bordered by low maintenance plantings
- Undercover alfresco area linking seamlessly with the



## 2/95 EASTBOURNE RD ROSEBUD

This image is an artistic representation. It is the responsibility of all interested parties to verify all data depicted and omitted.