

16 Sayvon Court DROMANA VIC

3  2  2 

An unforgettable home, this residence was designed by award-winning architect, Graham Jones, of Graham Jones Design. Combining light-filled interiors and show stopping vistas of Port Phillip Bay, this immaculate home is both opulent and inspiring.

Land Size : 546 sqm

View : <https://www.ypa.com.au/7392883>

Featuring:

With views to thrill, sweeping from the shoreline of Safety Beach to the rise of Mt Martha

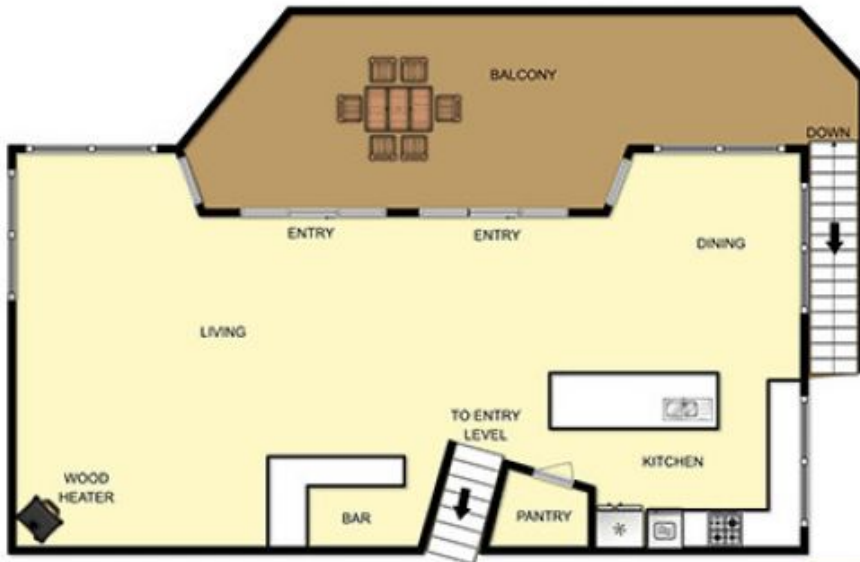
The panoramic vistas take in the magnificence of the bay all the way to the city skyline

Meticulously crafted to maximise this incredible location

Quiet, cul de sac position enjoying the elevation of hillside Dromana

Impeccable interiors including three king-sized bedrooms, all with generous built-in robes

Large glass-framed balcony from which you can further



UPPER LEVEL



ENTRY AND LOWER LEVEL

16 SAYVON COURT DROMANA

This image is an artistic representation. It is the responsibility of all interested parties to verify all data depicted and omitted.