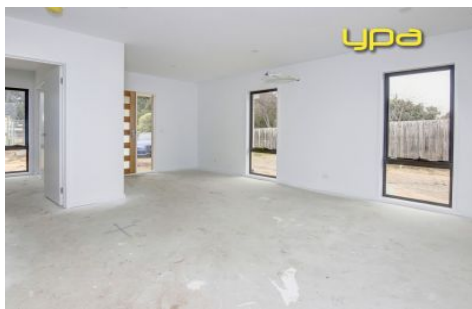


# ypa



1/334 Eastbourne Road ROSEBUD VIC

3  2  2 

....of a brand, new home. Soon to be completed, now is your chance to lock in the opportunity for your very own, brand new residence. Single level in design and featuring the finest appointments, say hello to your gorgeous, sparkling home and the sublime Peninsula lifestyle.

View : <https://www.ypa.com.au/7392943>

Featuring:

Contemporary facade and of brick construction

One of only two on the block and enjoying the front position

Modern and fresh interiors set against a neutral colour palette

Sleek and sophisticated finishes with easy-care flooring



# 1/334 EASTBOURNE RD ROSEBUD

This image is an artistic representation. It is the responsibility of all interested parties to verify all data depicted and omitted.