



1 Mannana Street RYE VIC

3 1 1

Amazing opportunity to secure a fantastic solid, brick veneer home in the thriving Peninsula market. Located on a private corner allotment and with fresh, crisp interiors, this property is ideal for those who live, holiday or invest on the Peninsula. This property is ready for you to put your stamp on it and make it your own.

Land Size : 632 sqm

View : <https://www.ypa.com.au/7393002>

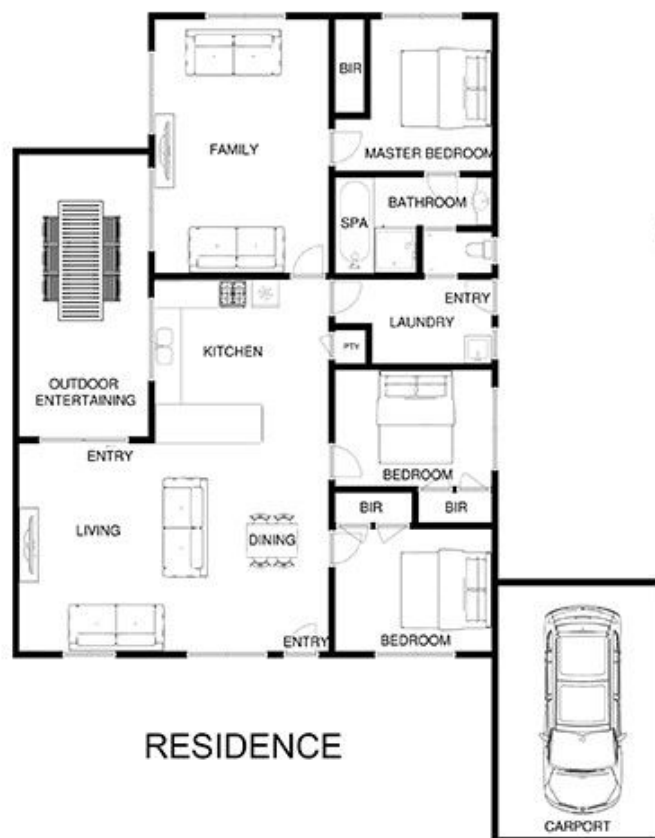
Featuring:

- Situated on a sizeable corner allotment of 632sqm*
- Three bedrooms, all with their own built-in robes
- Single carport plus plenty of additional parking space
- Family bathroom with the benefit of dual access to the master bedroom
- Two separate zoned living areas- absolutely ideal for modern family living
- Interiors flowing out seamlessly to the outdoor entertaining



1 MANNANA ST RYE

This image is an artistic representation. It is the responsibility of all interested parties to verify all data depicted and omitted.



RESIDENCE

SITE

1 MANNANA ST RYE

This image is an artistic representation. It is the responsibility of all interested parties to verify all data depicted and omitted.