



14 Como Avenue RYE VIC

3 1 2

Sitting in an ultra-quiet pocket of Rye, this well-built home represents a wonderful opportunity to a host of buyers. Whether you are starting out, looking for a holiday pad, investment or downsizing, this conveniently located home awaits.

Land Size : 1034 sqm

View : <https://www.ypa.com.au/7393011>

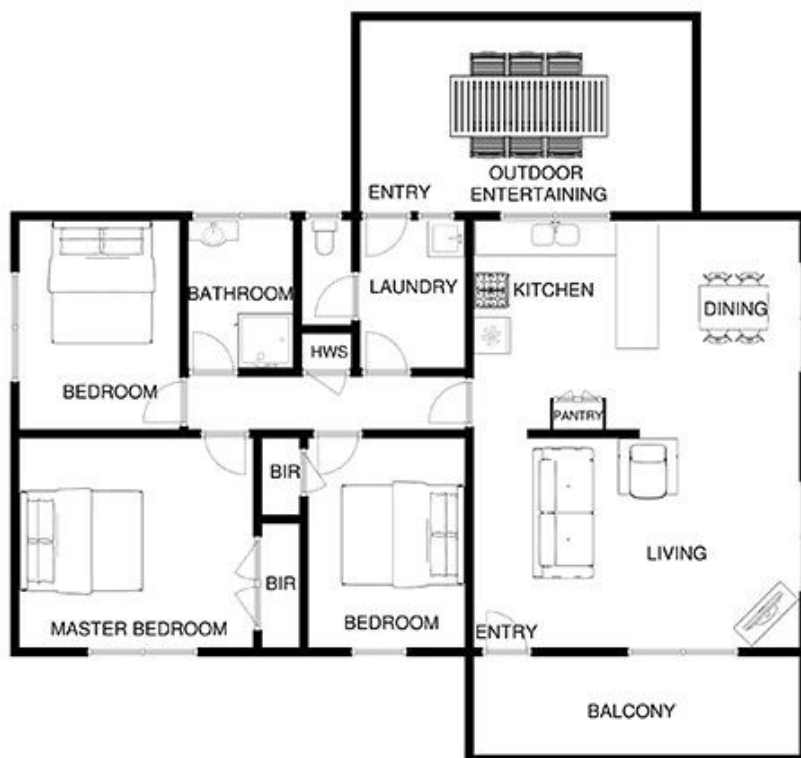
Featuring:

- Three good sized bedrooms (two of which are robed)
- Sprawling allotment of 1034sqm* offering privacy and lovely outlooks
- Older kitchen and bathroom, which are perfectly functional, yet allow you to modernise to your taste and timeline
- Raked ceilings in the living areas which are also pitched to further adds to the sense of space
- Lock-up garage with an extra-high clearance.perfect for boat, van, etc.



14 COMO AVE RYE

This image is an artistic representation. It is the responsibility of all interested parties to verify all data depicted and omitted.



RESIDENCE

SITE

14 COMO AVE RYE

This image is an artistic representation. It is the responsibility of all interested parties to verify all data depicted and omitted.