

13 Hanoverian Street CLYDE NORTH VIC

3 2 2

Soak up the good life in this contemporary three-bedroom residence situated in peaceful estate of Selandra Rise. Single-level, easy-care and flanked by inviting outdoor spaces, this property represents a tranquil life for any modern family.

Land Size : 392 sqm

View : <https://www.ypa.com.au/7393022>

Featuring:

Striking, modern design on a near-level allotment
Light-filled interiors accented with neutral whites and soft greys

Three Bedrooms - Two have built-in robes and are generous in size, the master bedroom has a walk in robe
Only five years young and meticulously maintained

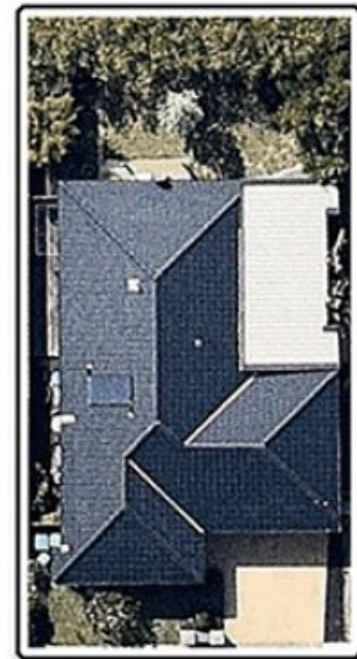
Full-fencing coupled with the stunning tropical gardens make this property ideal for entertaining, children and pets

Paved alfresco zone complete with Bondor solar span



13 HANOVERIAN ST CLYDE NORTH

This image is an artistic representation. It is the responsibility of all interested parties to verify all data depicted and omitted.



13 HANOVERIAN ST CLYDE NORTH

This image is an artistic representation. It is the responsibility of all interested parties to verify all data depicted and omitted.