



13 Deighton Drive ROSEBUD VIC

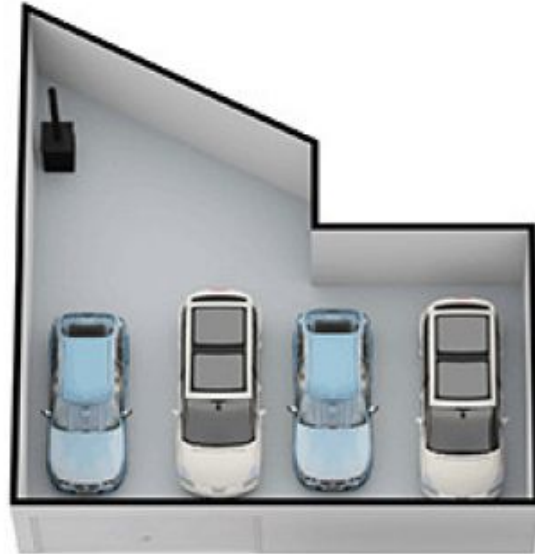
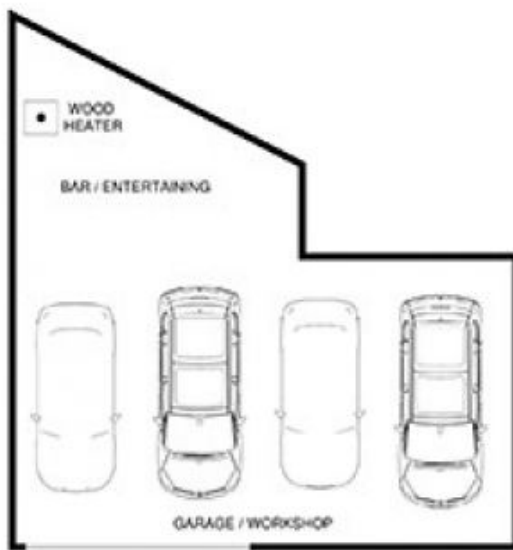
3 1 4

Backing onto a reserve, this property is calling all families to make it home. Fresh, bright and open with two distinct living areas, this inviting home is renovated and ready just turn the key and enjoy.

Land Size : 801 sqm
View : <https://www.ypa.com.au/7393027>

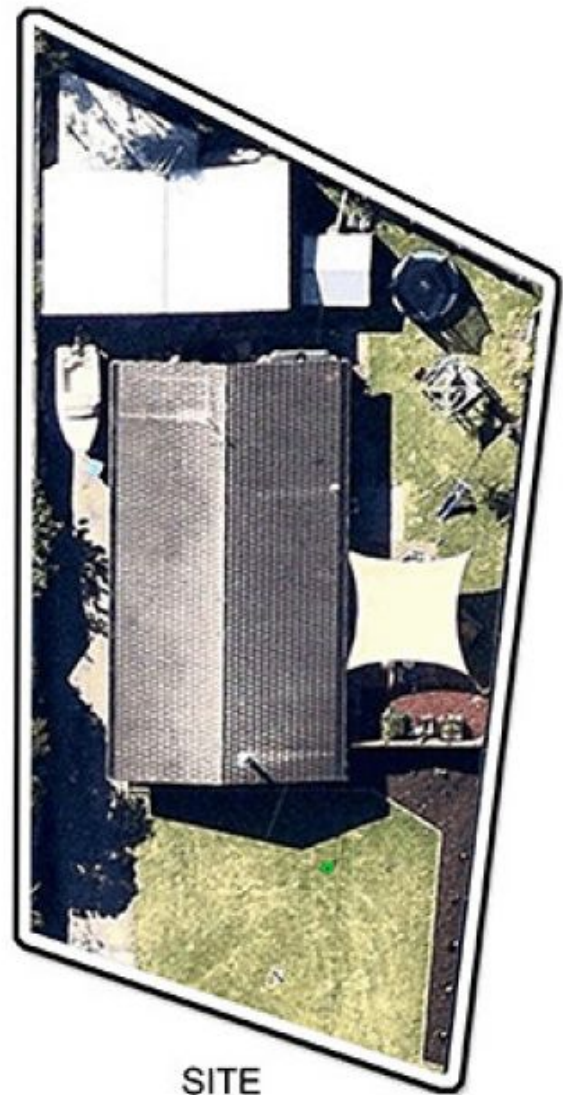
Featuring:

- Set on a large, level allotment to maximise space for entertaining, relaxing, children and pets
- Light-filled interiors complemented by a neutral palette and the warmth of timber and brick accents
- Floor to ceiling windows and a family-friendly floor plan further enhance the sense of space
- Generous proportions throughout with three bedrooms and central family bathroom
- Separately zoned second living area which provides a welcome haven for the family - made even more inviting



13 DEIGHTON DRIVE ROSEBUD

This image is an artistic representation. It is the responsibility of all interested parties to verify all data depicted and omitted.



13 DEIGHTON DRIVE ROSEBUD

This image is an artistic representation. It is the responsibility of all interested parties to verify all data depicted and omitted.