



4 Yarrayne Street RYE VIC

3 2 2

Constructed by a renowned Peninsula builder, this stunning home is nestled amongst the native Moonahs to provide an authentic beach house feel. Boasting a lovely elevation, enjoy the wrap-around deck and coastal inspired interiors to your hearts content.

Featuring:

- Designed to maximise the outlooks on this private Peninsula allotment

- Spreading out over two levels with all the bedrooms on the one floor

- The master bedroom is expansive and is serviced by a generous walk-in robe and en suite

- The bath takes centre stage in the main bathroom

Anchored by polished floorboards against a crisp colour palette, just move in and your seaside life is complete

View : <https://www.ypa.com.au/7393046>



MAIN LEVEL



MAIN LEVEL



LOWER LEVEL



LOWER LEVEL

4 YARRAYNE ST RYE

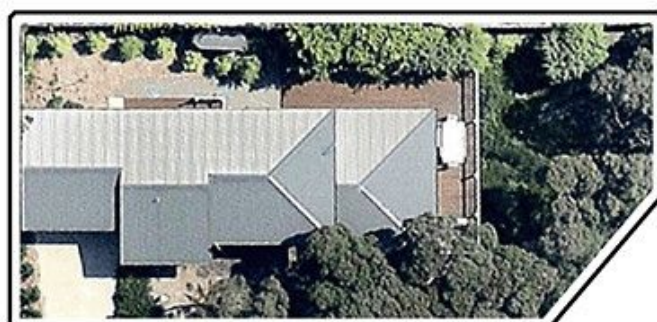
This image is an artistic representation. It is the responsibility of all interested parties to verify all data depicted and omitted.



MAIN LEVEL



LOWER LEVEL



SITE

4 YARRAYNE ST RYE

This image is an artistic representation. It is the responsibility of all interested parties to verify all data depicted and omitted.