



9 Roslyn Avenue RYE VIC

7 3 2

Nestled in the rustic heart of the sought-after Tyrone pocket, this HUGE home is just four streets from the waters edge and represents an abundance of opportunities.

Land Size : 674 sqm
View : <https://www.ypa.com.au/7393078>

Featuring:

Masses of space for the largest of families/ dual families or lucrative letting options with seven robed bedrooms

A separate self-contained area on the lower level, complete with two bedrooms and a bathroom plus its own kitchen and living area

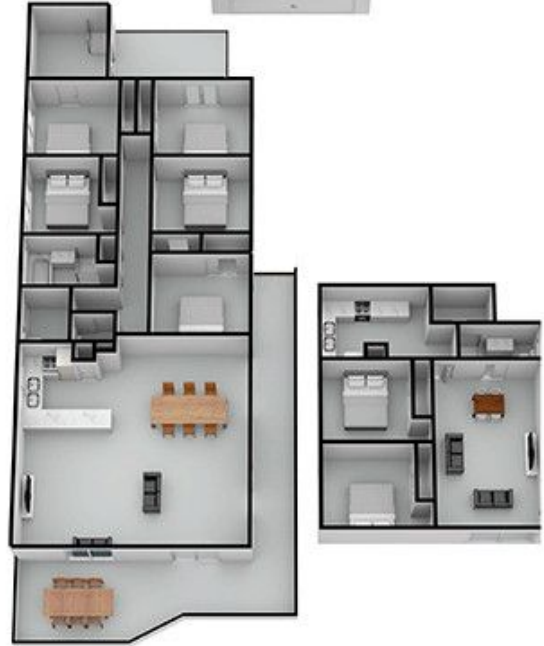
The broad wrap-around deck is just perfect for entertaining whilst the children and pets will delight in the private gardens

Currently leased with an excellent return of \$650 per week* with the possibility of vacant possession

Stroll with ease to the tranquil waters of Tyrone foreshore



Jade Springer
0437 410 791



9 ROSLYN AVE RYE

This image is an artistic representation. It is the responsibility of all interested parties to verify all data depicted and omitted.



SITE



MAIN LEVEL

9 ROSLYN AVE RYE



LOWER LEVEL

This image is an artistic representation. It is the responsibility of all interested parties to verify all data depicted and omitted.