



**69 Carrathool Avenue ROSEBUD VIC**

**3** **2** **2**

**PRICED FOR IMMEDIATE SALE**

This well presented family home set on approximately 839 sqm\* has been lovingly owned and cared for and is now ready for a new family to move in and call it their own.

Enjoy your weekends watching the ships go by from the front balcony or perhaps you may choose to take a short walk to the Blue range winery just around the corner to enjoy some delicious food and wine. Which ever way you decide to spend your spare time, your weekends just got better.

Set back away from the hustle and bustle of busy Rosebud this tranquil home will warm your heart and invite you to stay.

**Land Size** : 843 sqm

**View** : <https://www.ypa.com.au/7393119>



**Tony Talarico**  
**0420 778 401**

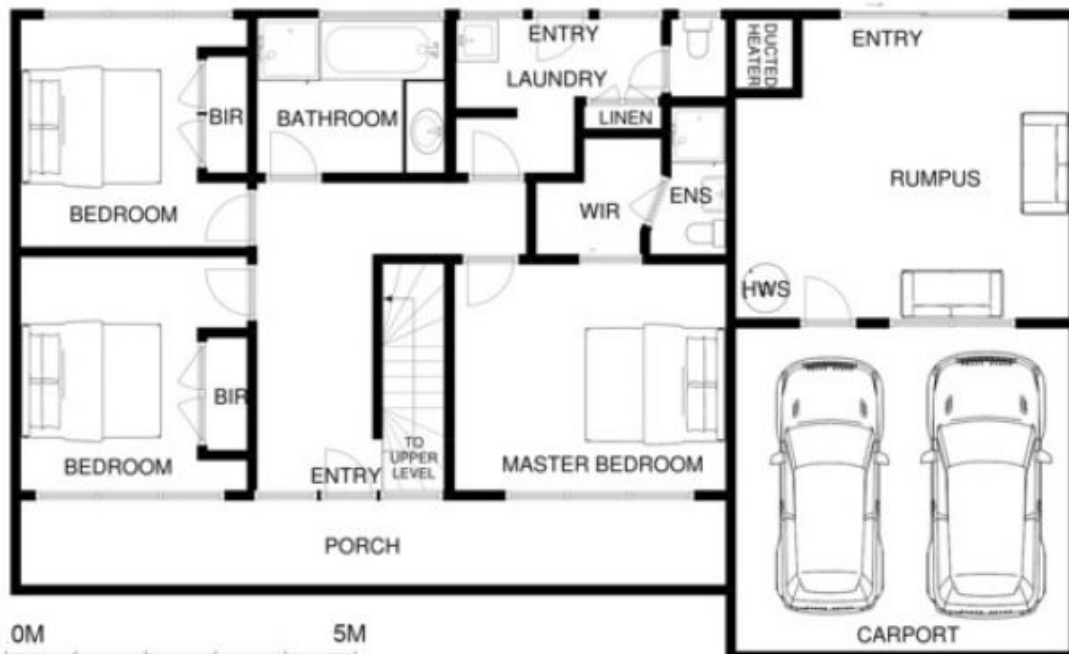




UPPER LEVEL



SITE



MAIN LEVEL

# 69 CARRATHOOL AVE ROSEBUD

This image is an artistic representation. It is the responsibility of all interested parties to verify all data depicted and omitted.