



## 37 Shirlow Avenue RYE VIC

2  1  2 

600m\* to Bay Beach and only a short stroll to Rye shopping strip

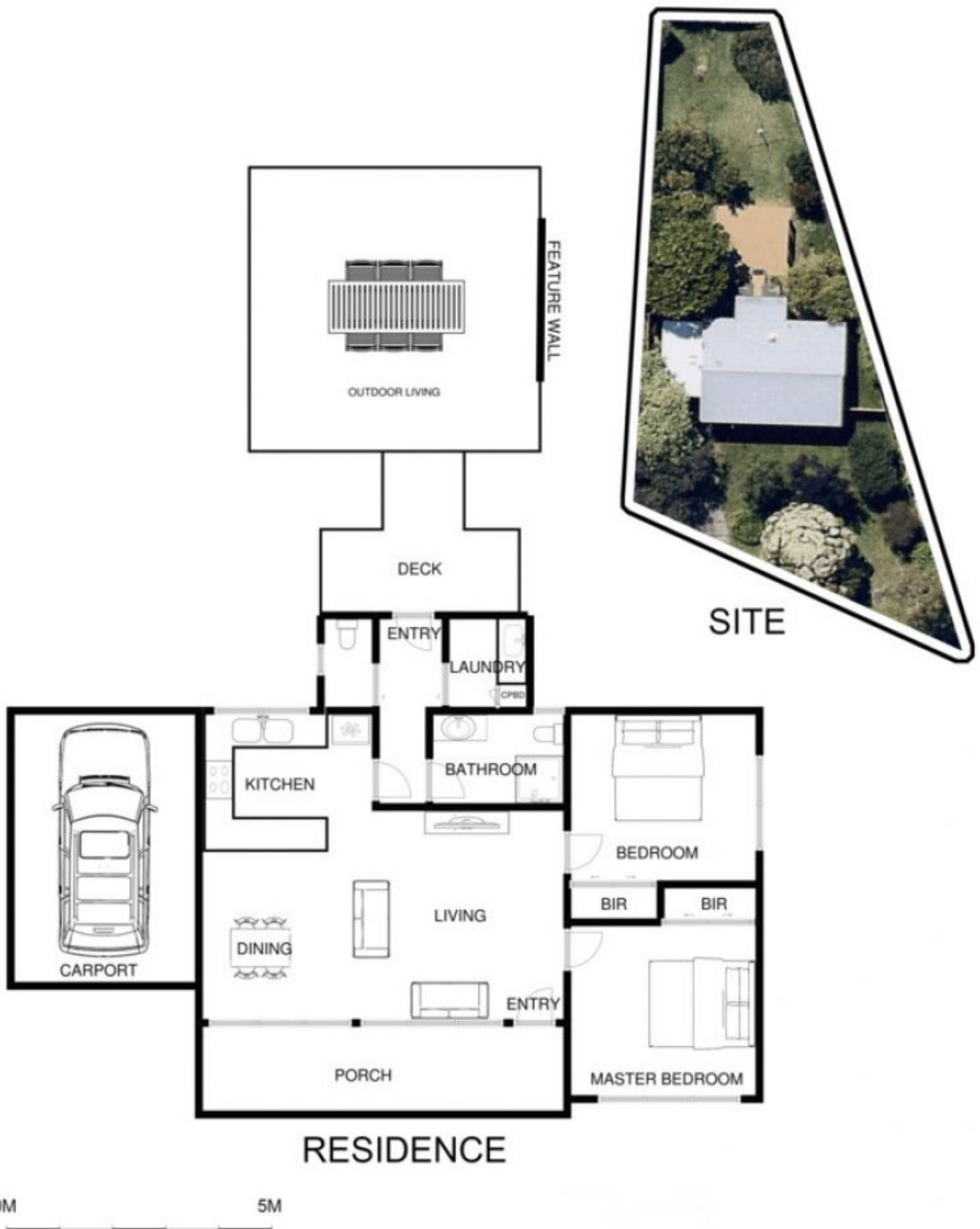
**Land Size** : 752 sqm  
**View** : <https://www.ypa.com.au/7393124>

A very low maintenance, spacious flat block of 752m2\*

Modernised open plan living, two good sized bedrooms with BIR's, brand new kitchen, laundry and bathrooms, all done - nothing else to do!

A perfect home for entertaining, whether it be hosting a barbeque, relaxing with friends and family on your outdoor setting or enjoying a quiet drink on the front porch.

In one of Rye's best locations and only a leisurely walk to the beach, restaurants, shops and Rye Primary School, this fantastic home would suit small families, holiday makers or retirees seeking their place in the sun.



# 37 SHIRLOW AVE RYE

This image is an artistic representation. It is the responsibility of all interested parties to verify all data depicted and omitted.