

11 Hanoverian Street CLYDE NORTH VIC

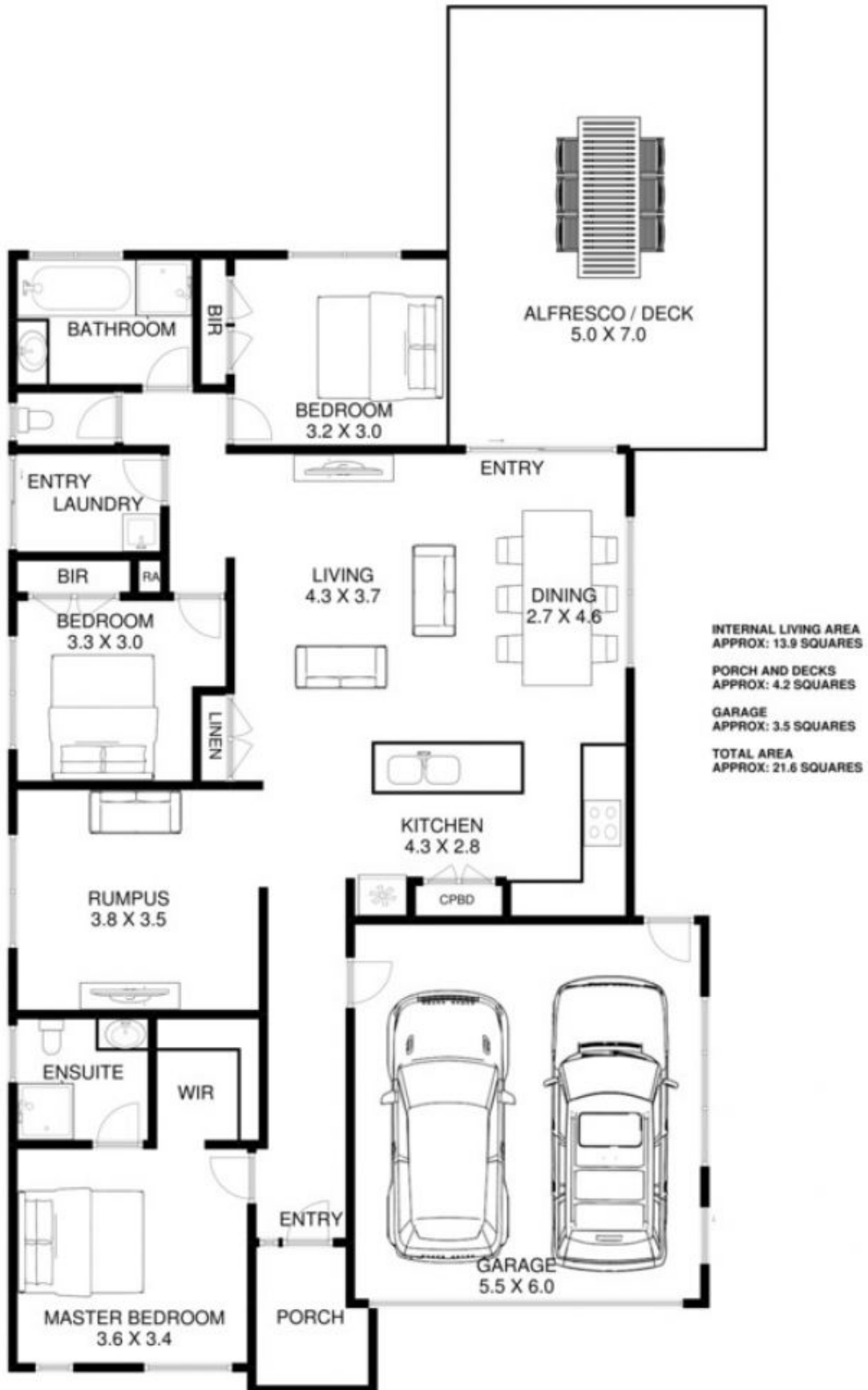
3  **2**  **2** 

AUCTION SATURDAY 31ST AUGUST AT 11AM

View : <https://www.ypa.com.au/7393152>

Situated in one of the quietest streets in the established Selandra Rise Estate, this perfect family home offers uncompromised living at its best, with sun filled rooms and an abundance of amenities all walking distance from your front door. This property is a must see for anyone looking for that perfect place to call home.

- Three bedrooms, master bedroom with walk in robe and ensuite
- Remote controlled double lock up garage with internal access to the home
- Dual living areas with an abundance of natural light



11 HANOVERIAN ST CLYDE NORTH

This is an artistic representation. All measurements, dimensions and illustrated areas are approximate. It is the responsibility of all interested parties to verify all data depicted and omitted.