

# ypa



## 26 Lahinch Drive FINGAL VIC

1  1 

Check out our full video tour in 4K, showing everything this property has to offer. PLEASE NOTE: THIS IS NOT JUST A SLIDESHOW!!!

**Land Size** : 867 sqm

**View** : <https://www.ypa.com.au/7393161>

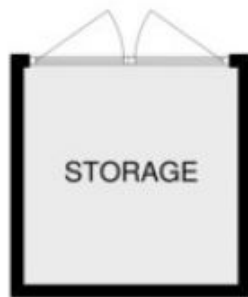
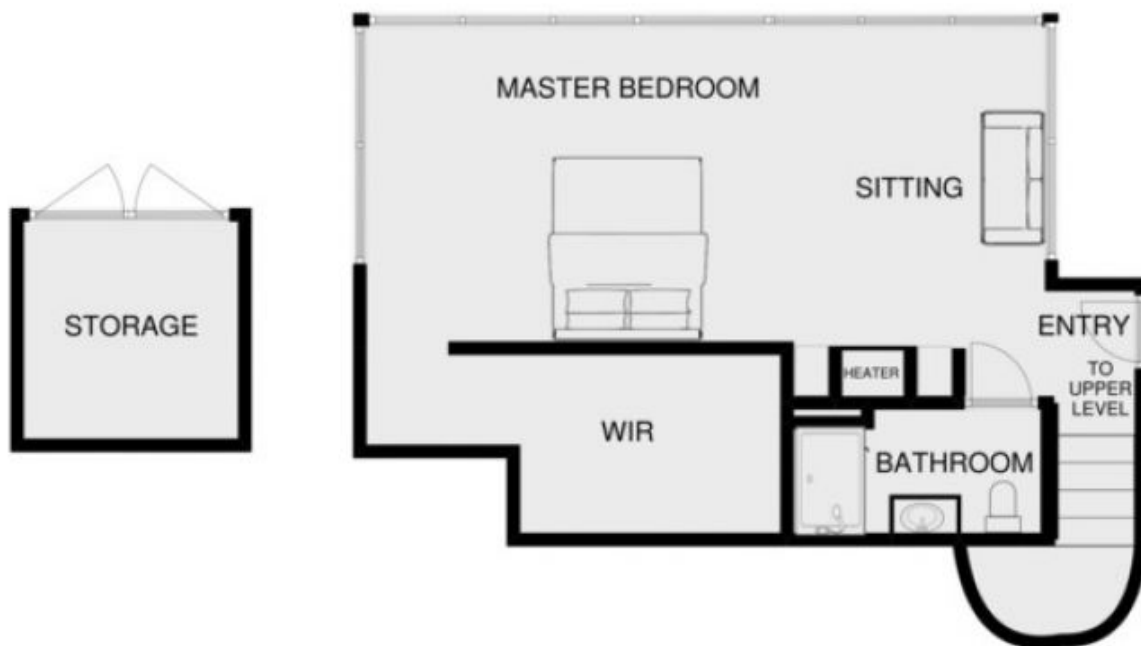
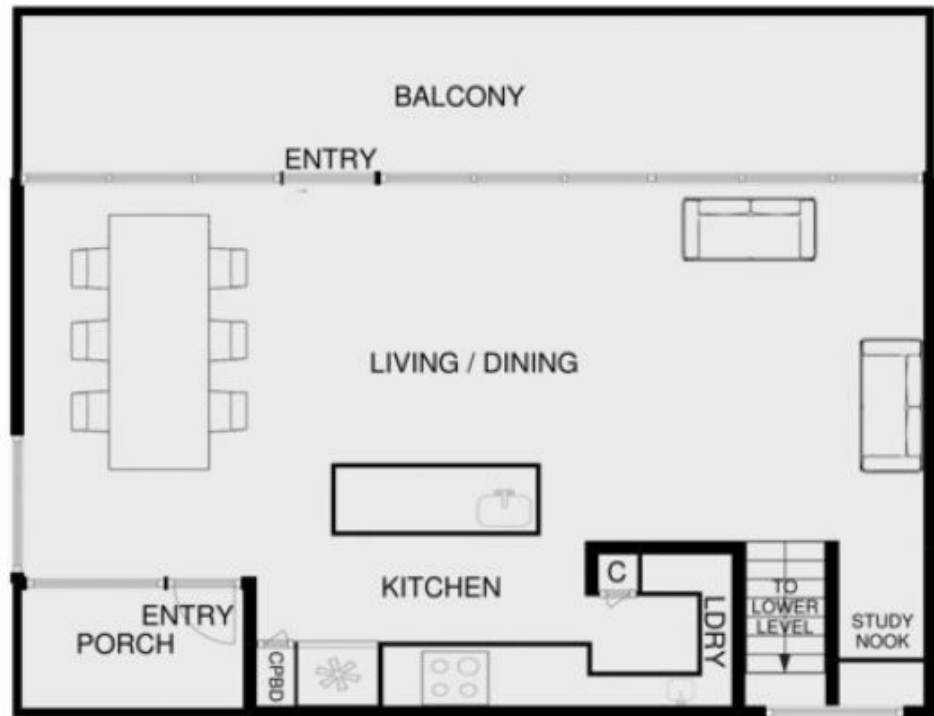
An individual expression of considered design, this spectacular residence located behind the private gates of the Moonah Links Estate, will simply take your breath away.

Architecturally designed to capture the expansive views over the Golf Course and beyond, this home showcases luxury finishes at every turn. Wall to wall glass in the main upstairs living space allows for the most incredible views overlooking the trees into the distance.

The well-appointed master retreat with gas log fire, perfect for those cosy evenings, ensures a peaceful place to relax



**Tony Talarico**  
0420 778 401



0M 5M

## 26 LAHINCH DRIVE FINGAL

This is an artistic representation. All measurements, dimensions and illustrated areas are approximate. It is the responsibility of all interested parties to verify all data depicted and omitted.