



118 Highbury Road Tootgarook VIC

3  2  1 

This brick family home is situated on a generous allotment of approx 1300sqm, and is ideal as a permanent residence, holiday home or investment property.

Land Size : 1300 sqm

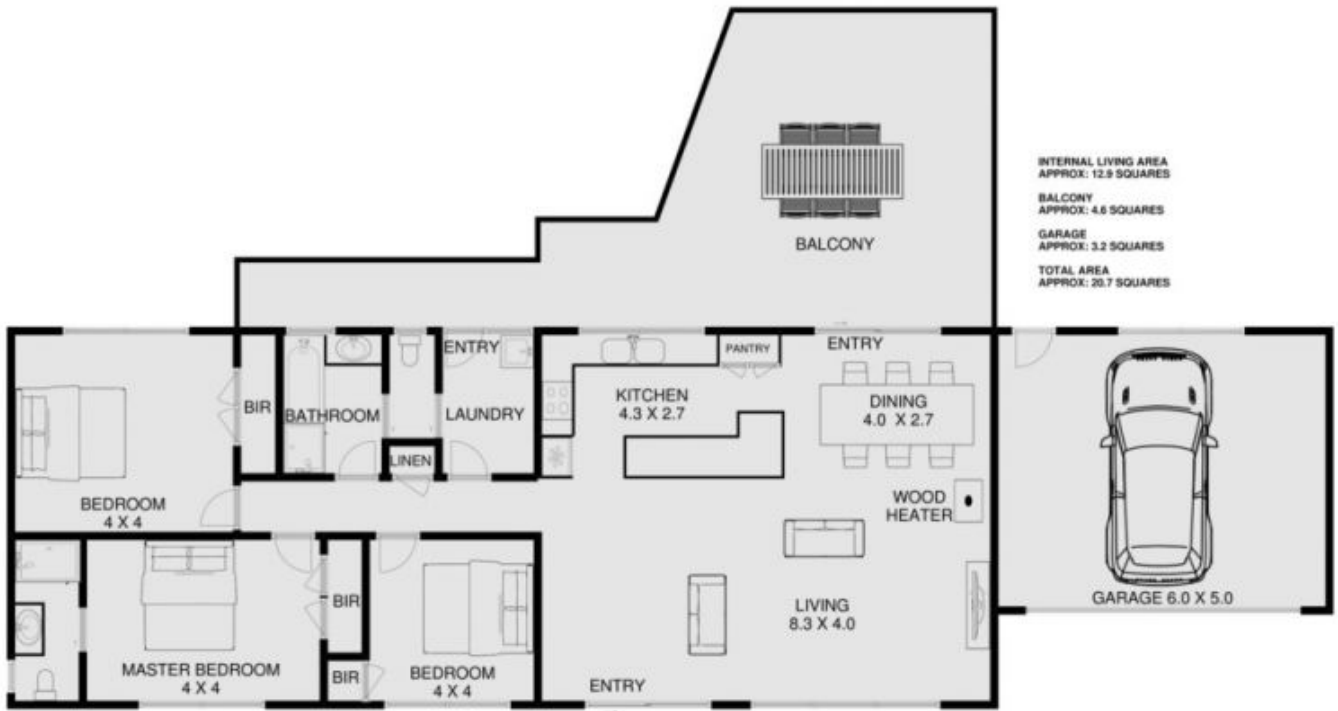
View : <https://www.ypa.com.au/7393176>

Featuring:

- Large and light open plan living area with tranquil outlooks
- Lovely wood heater for those cold nights
- Exposed beam ceilings throughout
- Three bedrooms & two bathrooms
- Spacious garage



Tony Talarico
0420 778 401



118 HIGHBURY ROAD TOOTGAROOK

This is an artistic representation. All measurements, dimensions and illustrated areas are approximate. It is the responsibility of all interested parties to verify all data depicted and omitted.